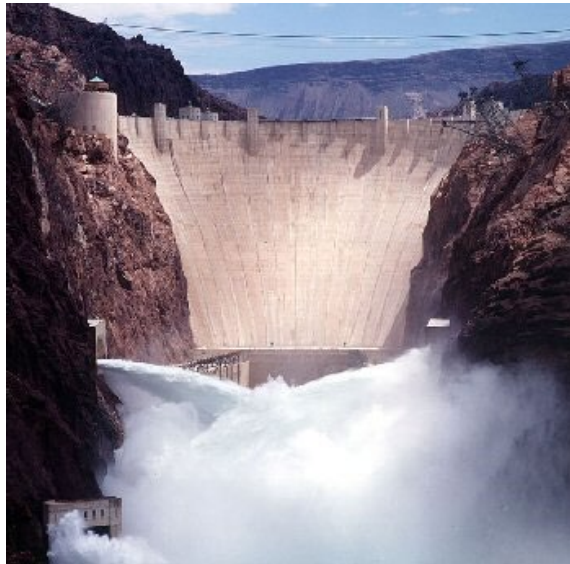


COLORADO RIVER BASIN UPDATE AND STATUS

Presented to:

**Arizona Water Banking Authority (AWBA)
September 15, 2021**

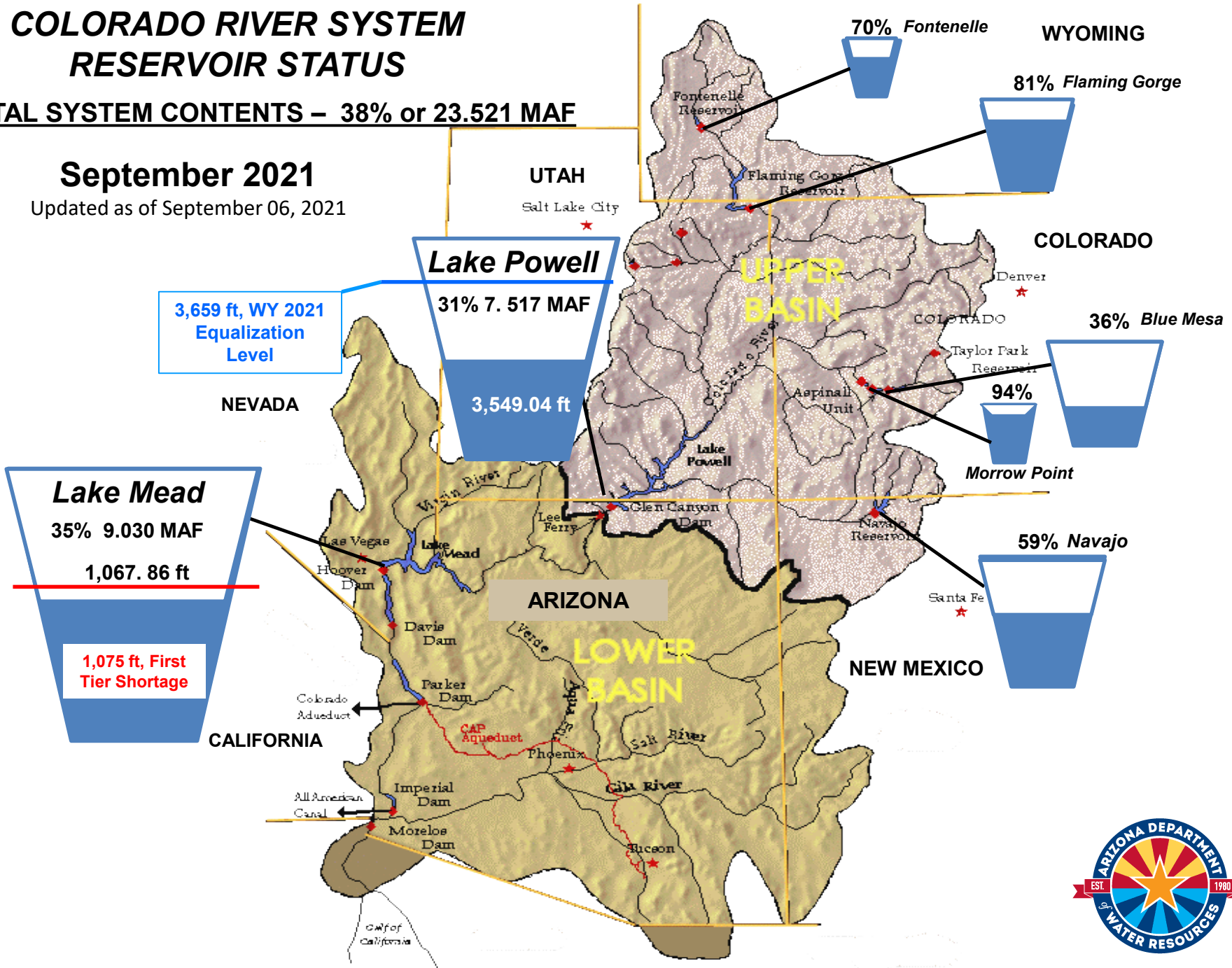


COLORADO RIVER SYSTEM RESERVOIR STATUS

TOTAL SYSTEM CONTENTS – 38% or 23.521 MAF

September 2021

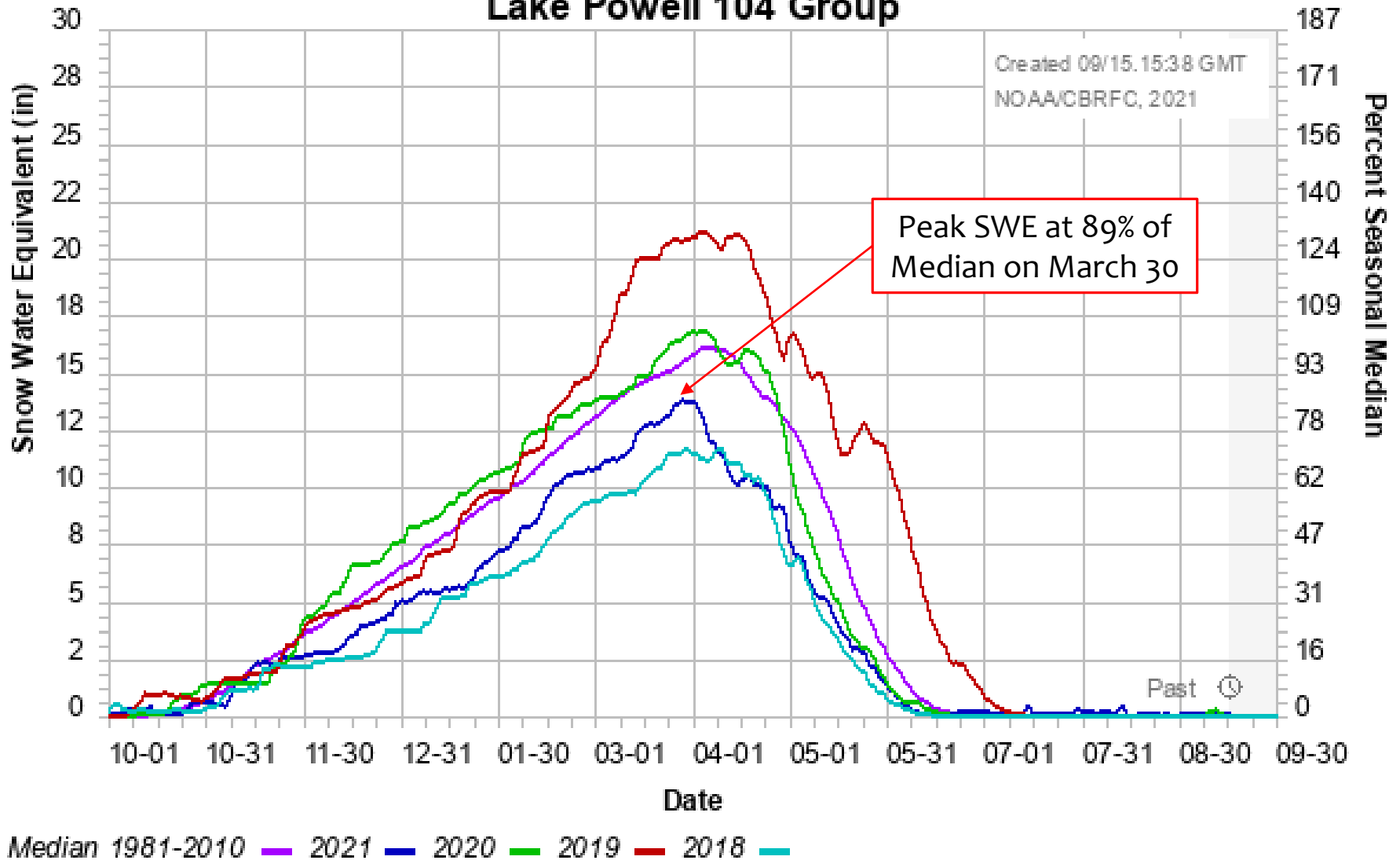
Updated as of September 06, 2021



Snow Water Equivalent

Conditions as of September 13, 2021

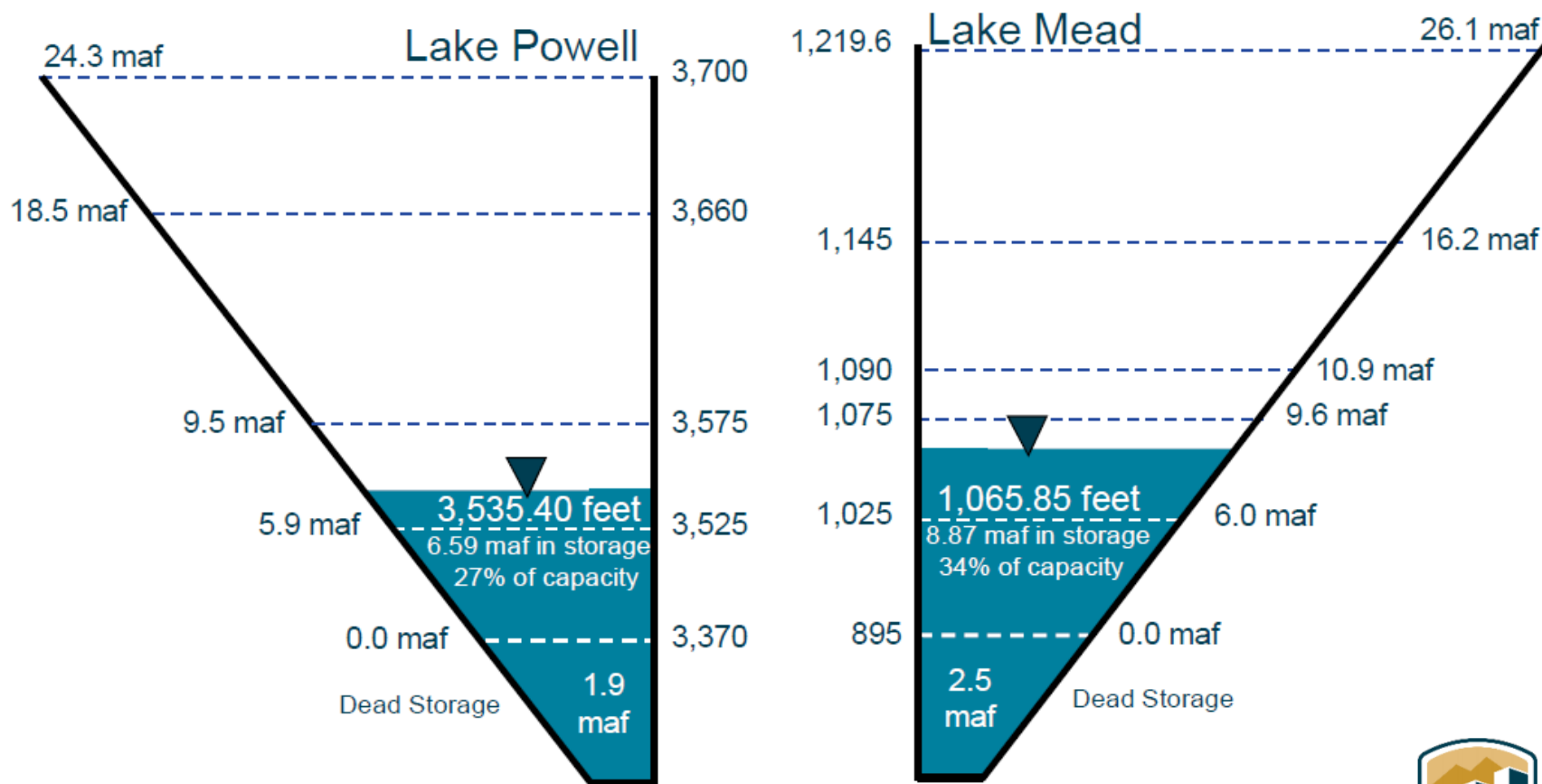
Colorado Basin River Forecast Center Lake Powell 104 Group



End of Calendar Year 2021 Projections

August 2021 24-Month Study Most Probable Inflow Scenario¹

Based on a Lake Powell release of 8.23 maf in WY 2021 and 7.48 maf in WY 2022



Not to Scale

¹ WY 2021 unregulated inflow into Lake Powell is based on the CBRFC forecast dated 8/2/21.



Lake Powell & Lake Mead Operational Table

Lake Mead Operating Condition Determination for CY 2022¹

Lake Powell			Lake Mead		
Elevation (feet)	Operation According to the Interim Guidelines	Live Storage (maf) ¹	Elevation (feet)	Operation According to the Interim Guidelines	Live Storage (maf) ¹
3,700	Equalization Tier Equalize, avoid spills or release 8.23 maf	24.3	1,220	Flood Control Surplus or Quantified Surplus Condition Deliver > 7.5 maf	25.9
3,636 - 3,666 (2008-2026)	Upper Elevation Balancing Tier ³ Release 8.23 maf; if Lake Mead < 1,075 feet, balance contents with a min/max release of 7.0 and 9.0 maf	15.5 - 19.3 (2008-2026)	1,200 (approx.) ²	Domestic Surplus or ICS Surplus Condition Deliver > 7.5 maf	22.9 (approx.) ²
3,575			1,145	Normal or ICS Surplus Condition Deliver ≥ 7.5 maf	15.9
3,529.37 ft <i>Jan 1, 2022 Projection</i>	Mid-Elevation Release Tier Release 7.48 maf; if Lake Mead < 1,025 feet, release 8.23 maf	9.5	1,105	Normal or ICS Surplus Condition Deliver ≥ 7.5 maf	11.9
			1,075	Shortage Condition Deliver 7.167 ⁴ maf	9.4
3,525	Lower Elevation Balancing Tier Balance contents with a min/max release of 7.0 and 9.5 maf	5.9	1,050	Shortage Condition Deliver 7.083 ⁵ maf	7.5
3,490			1,025	Shortage Condition Deliver 7.0 ⁶ maf Further measures may be undertaken ⁷	5.8
3,370			895	Shortage Condition Deliver 7.0 ⁶ maf Further measures may be undertaken ⁷	4.3
		0	895		0

Diagram not to scale

¹ Acronym for million acre-feet

² This elevation is shown as approximate as it is determined each year by considering several factors including Lake Powell and Lake Mead storage, projected Upper Basin and Lower Basin demands, and an assumed inflow.

³ Subject to April adjustments which may result in a release according to the Equalization Tier

⁴ Of which 2.48 maf is apportioned to Arizona, 4.4 maf to California, and 0.287 maf to Nevada

⁵ Of which 2.40 maf is apportioned to Arizona, 4.4 maf to California, and 0.283 maf to Nevada

⁶ Of which 2.32 maf is apportioned to Arizona, 4.4 maf to California, and 0.280 maf to Nevada

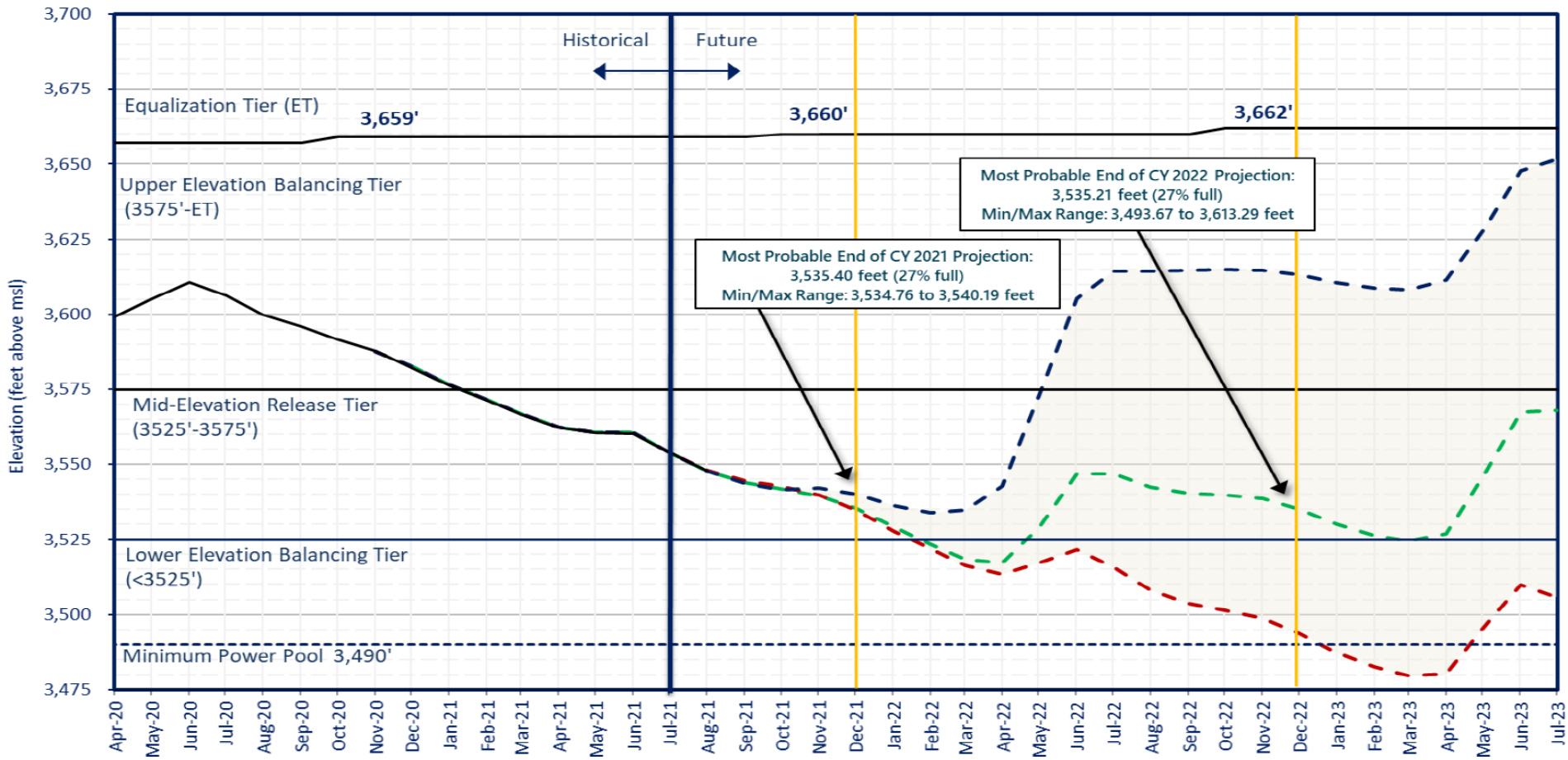
⁷ Whenever Lake Mead is below elevation 1,025 feet, the Secretary shall consider whether hydrologic conditions together with anticipated deliveries to the Lower Division States and Mexico is likely to cause the elevation at Lake Mead to fall below 1,000 feet. Such consideration, in consultation with the Basin States, may result in the undertaking of further measures, consistent with applicable Federal law.

¹ Lake Powell and Lake Mead operational tier determinations are based on August 2021 24-Month Study projections will be documented in the draft 2022 AOP.



Lake Powell End of Month Elevations

Projections from the August 2021 24-Month Study Inflow Scenarios



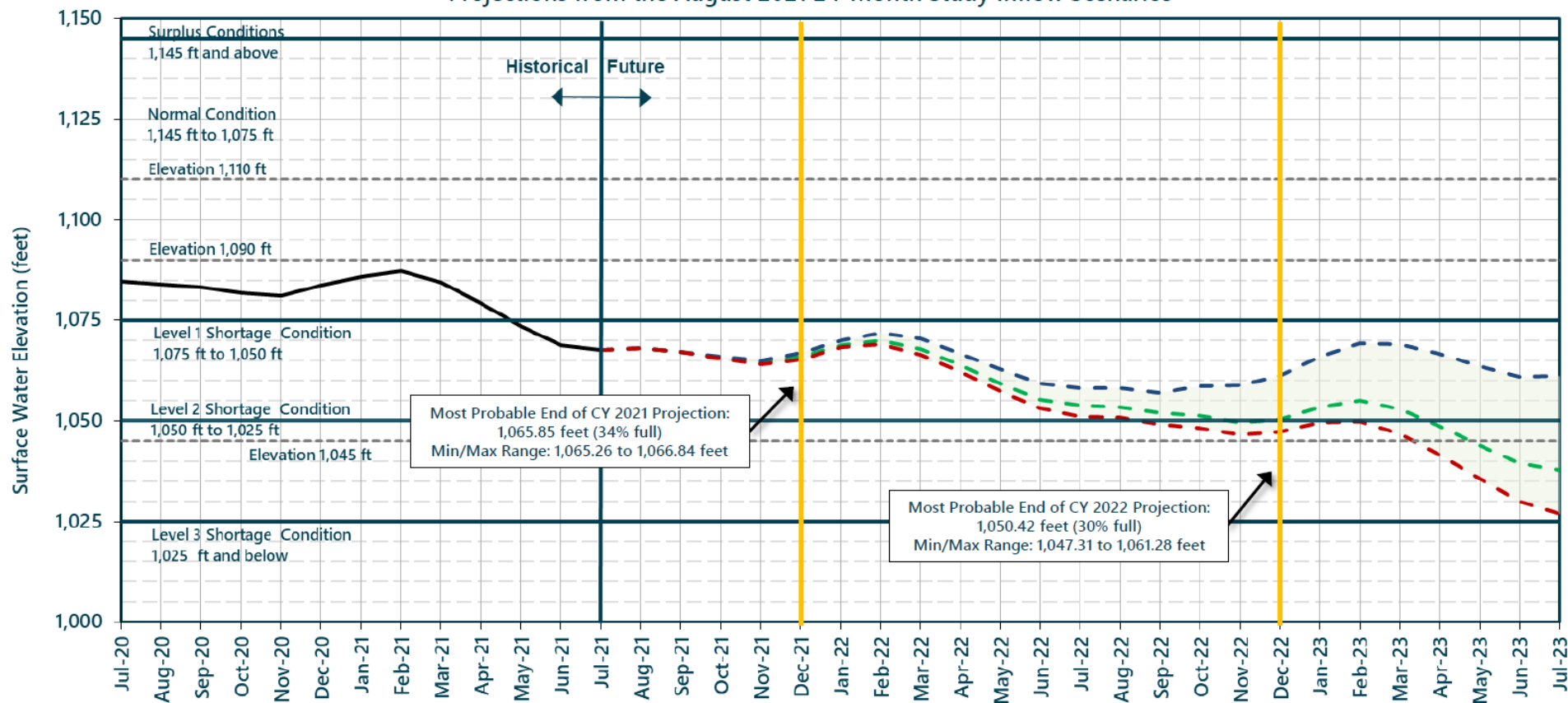
- August 2021 Most Probable - Lake Powell release of 8.23 maf in WY2021 and 7.48 maf in WY2022
- August 2021 Minimum Probable - Lake Powell release of 8.23 maf in WY2021 and 7.48 maf in WY2022
- August 2021 Maximum Probable - Lake Powell release of 8.23 maf in WY2021 and 7.48 maf in WY2022
- Historical Elevations



BUREAU OF RECLAMATION

Lake Mead End of Month Elevations

Projections from the August 2021 24-Month Study Inflow Scenarios



- Historical Elevations
- August 2021 Most Probable Inflow with a Lake Powell release of 7.48 maf in WY 2022 and WY 2023
- August 2021 Maximum Probable Inflow with a Lake Powell release of 7.48 maf in WY 2022 and 9.00 maf in WY 2023
- August 2021 Minimum Probable Inflow with a Lake Powell release of 7.48 maf in WY 2022 and 7.00 maf in WY 2023

The Drought Response Operations Agreement (DROA) is available online at: <https://www.usbr.gov/dcp/finaldocs.html>.



Questions?

Craig McGinnis
cmcginnis@azwater.gov

