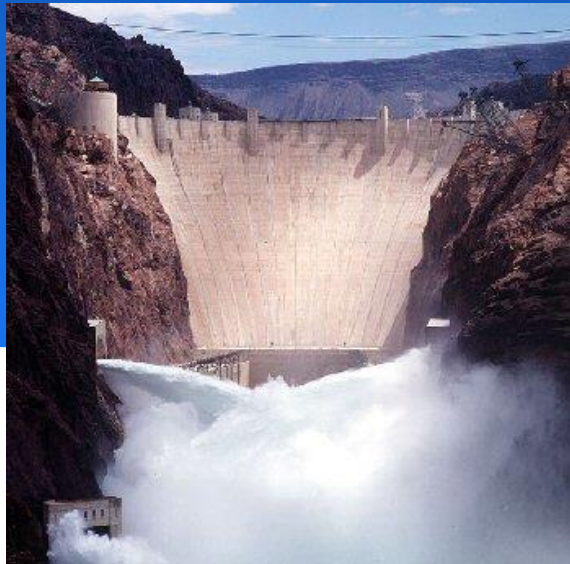


COLORADO RIVER BASIN UPDATE AND STATUS

Presented to

Arizona Water Banking Authority

June 19, 2019



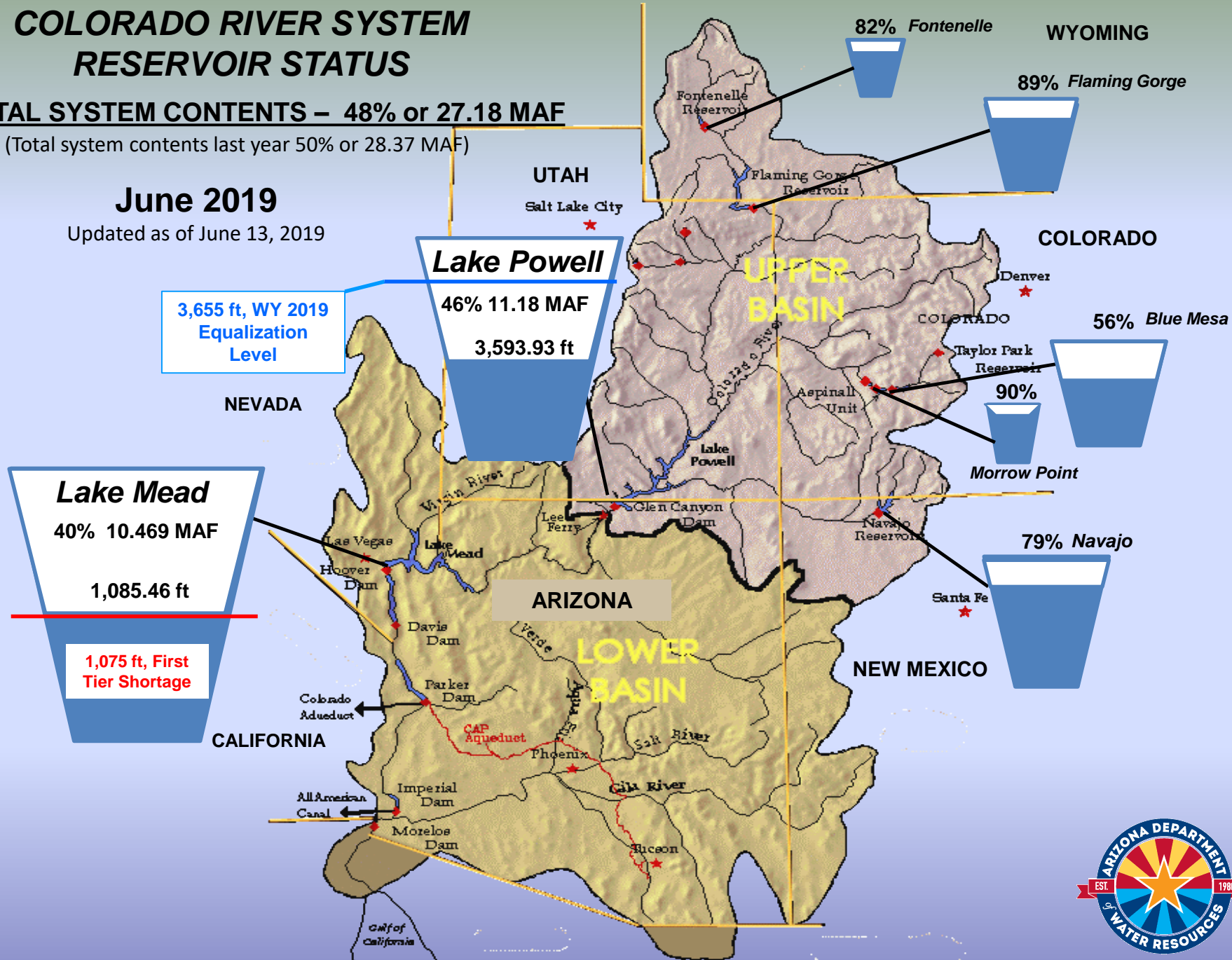
COLORADO RIVER SYSTEM RESERVOIR STATUS

TOTAL SYSTEM CONTENTS – 48% or 27.18 MAF

(Total system contents last year 50% or 28.37 MAF)

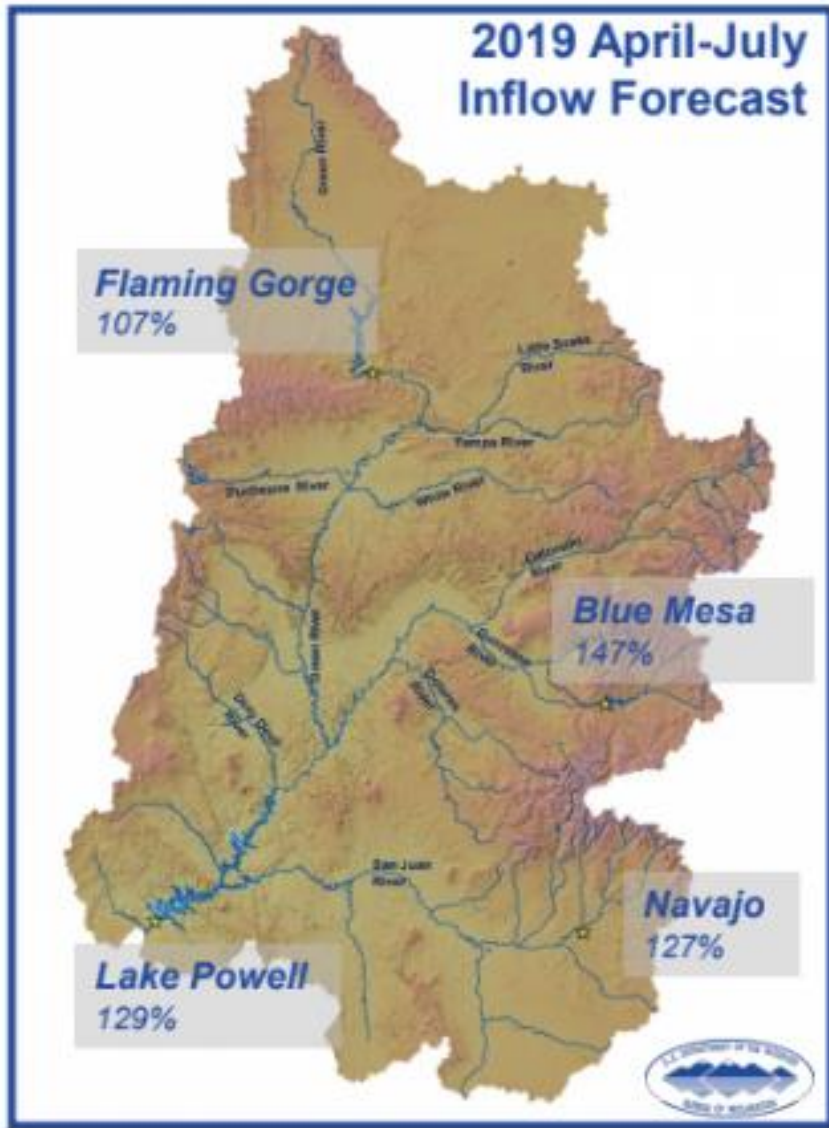
June 2019

Updated as of June 13, 2019



CBRFC Unregulated Inflow Forecast

Dated June 14, 2019

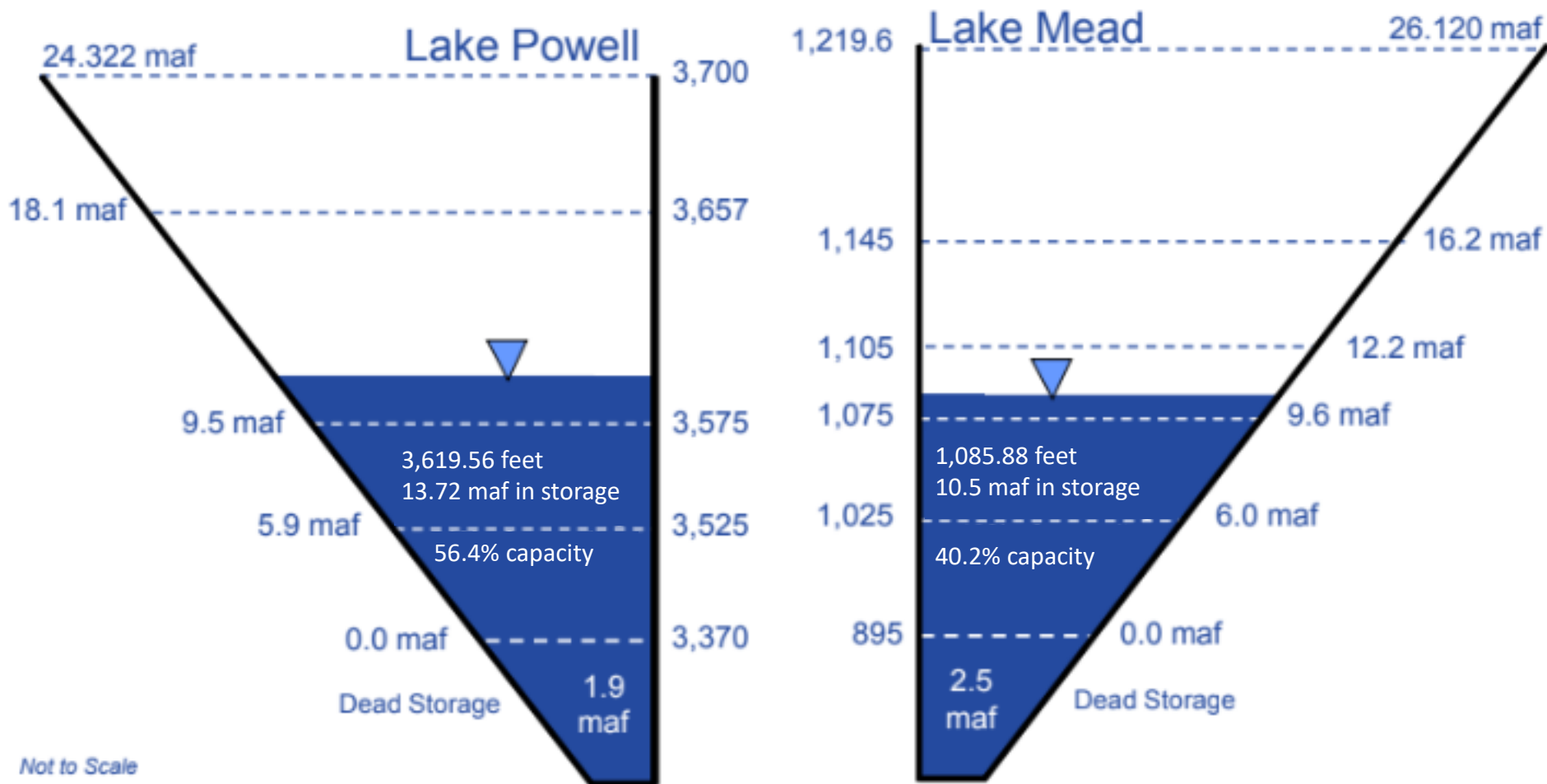


Powell Unregulated Inflow Forecast		
Month/Period	Inflow (kaf)	Percent of Average
Apr 2019 (Observed)	1,244	118
May 2019	2,500	107
Jun 2019	4,400	165
Jul 2019	2,150	197
2019 Apr-Jul	10,303	144
WY 2019	13,488	125

End of Calendar Year 2019 Projections

June 2019 24-Month Study Most Probable Inflow Scenario¹

Based on a Lake Powell release of 9.00 maf in WY 2019 & WY 2020

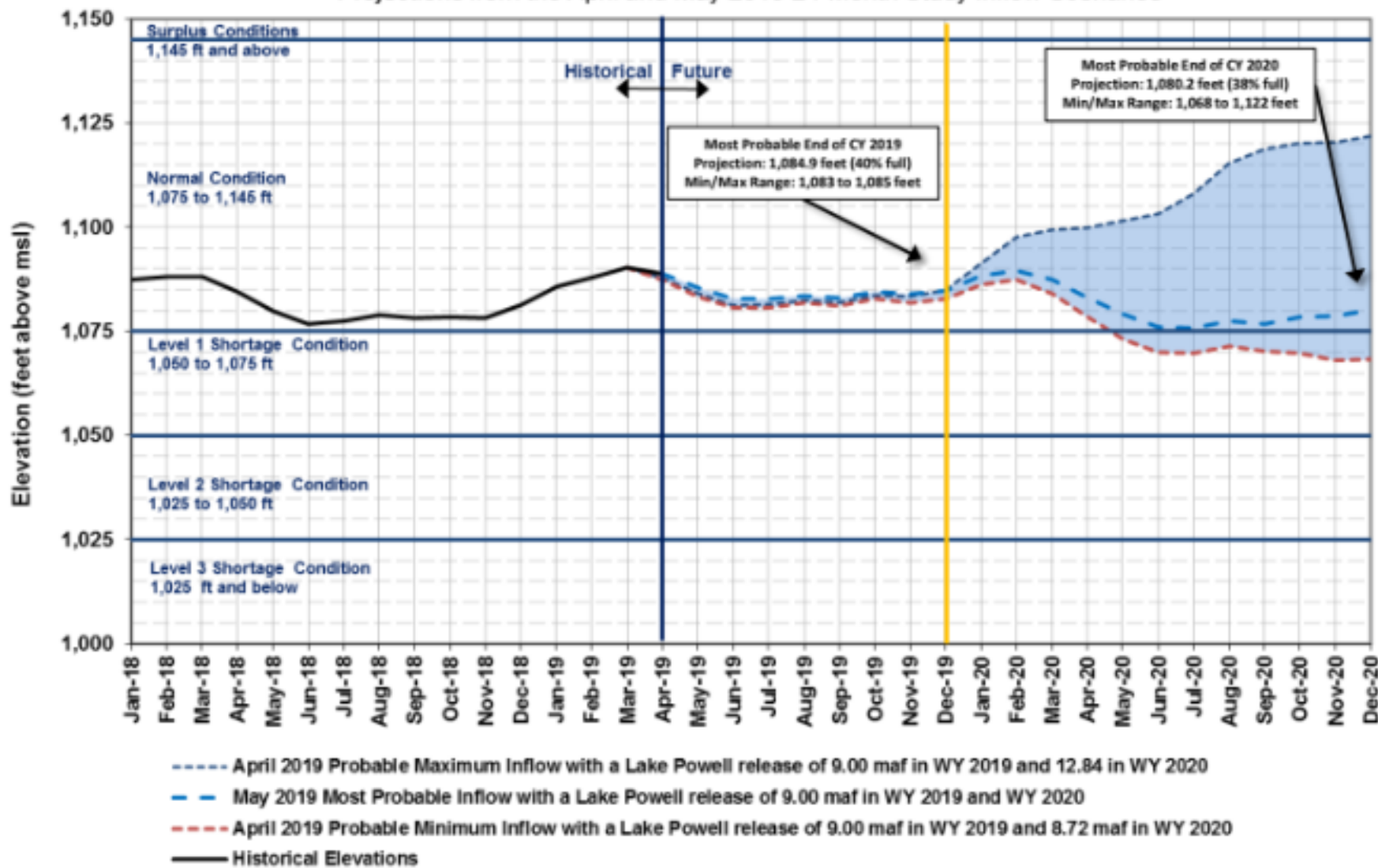


Not to Scale

¹ WY 2019 unregulated inflow into Lake Powell is based on the CBRFC forecast dated 6/14/19.

Lake Mead End of Month Elevations

Projections from the April and May 2019 24-Month Study Inflow Scenarios



Colorado Basin River Forecast Center

Lake Powell 104 Group

