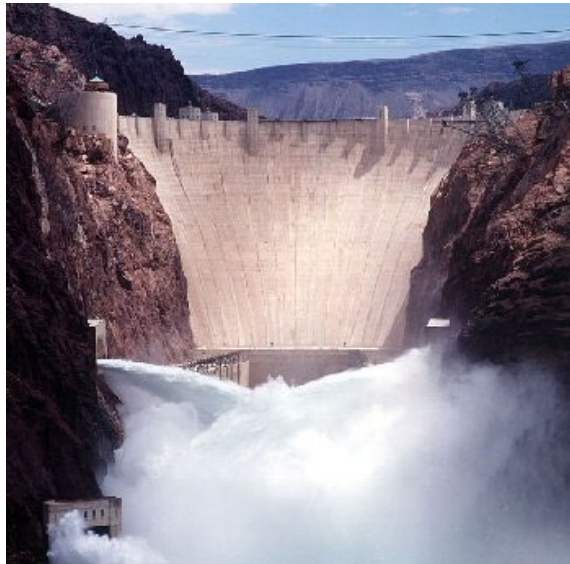


COLORADO RIVER BASIN UPDATE AND STATUS

Presented to:

Arizona Water Banking Authority (AWBA)

July 29, 2021



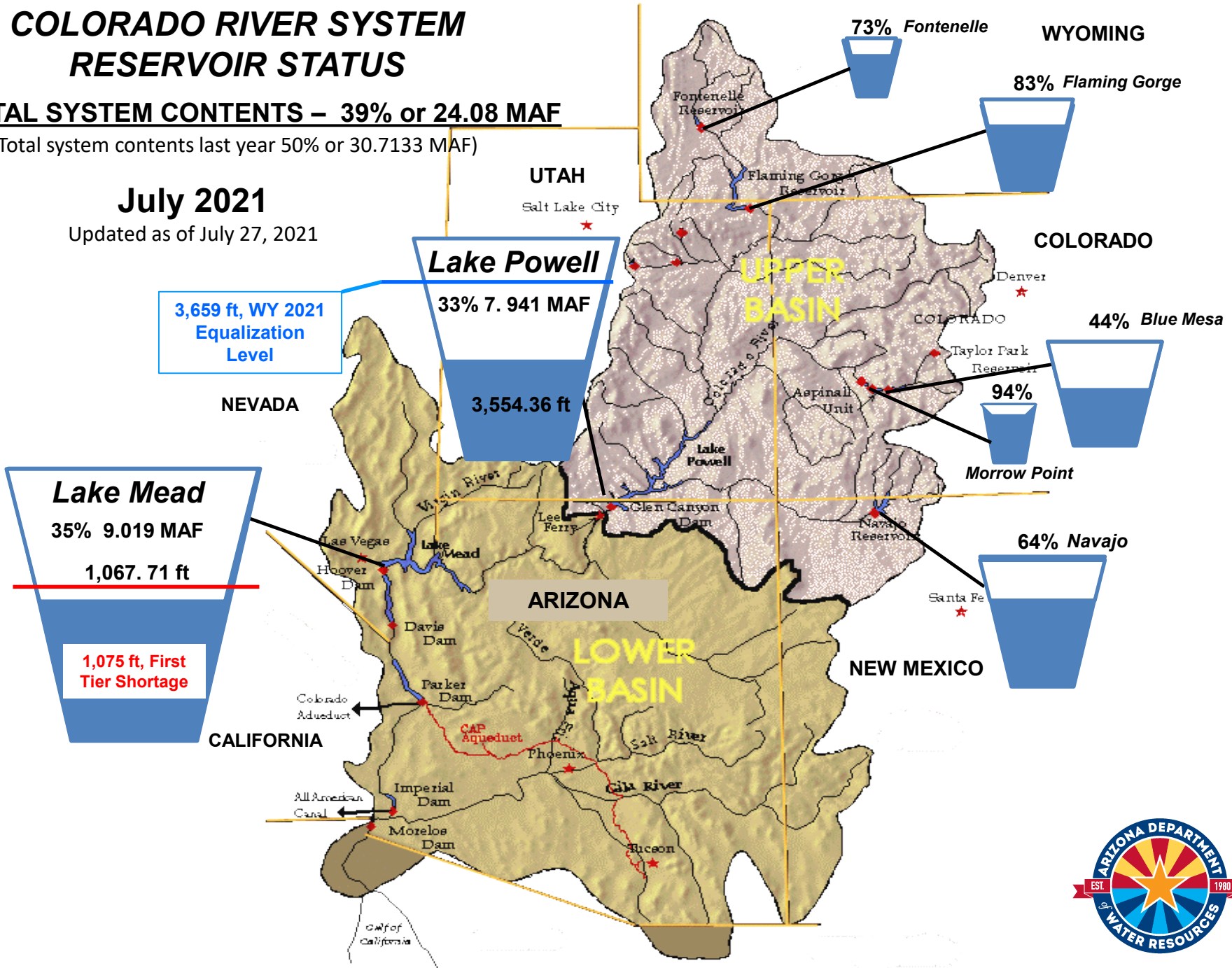
COLORADO RIVER SYSTEM RESERVOIR STATUS

TOTAL SYSTEM CONTENTS – 39% or 24.08 MAF

(Total system contents last year 50% or 30.7133 MAF)

July 2021

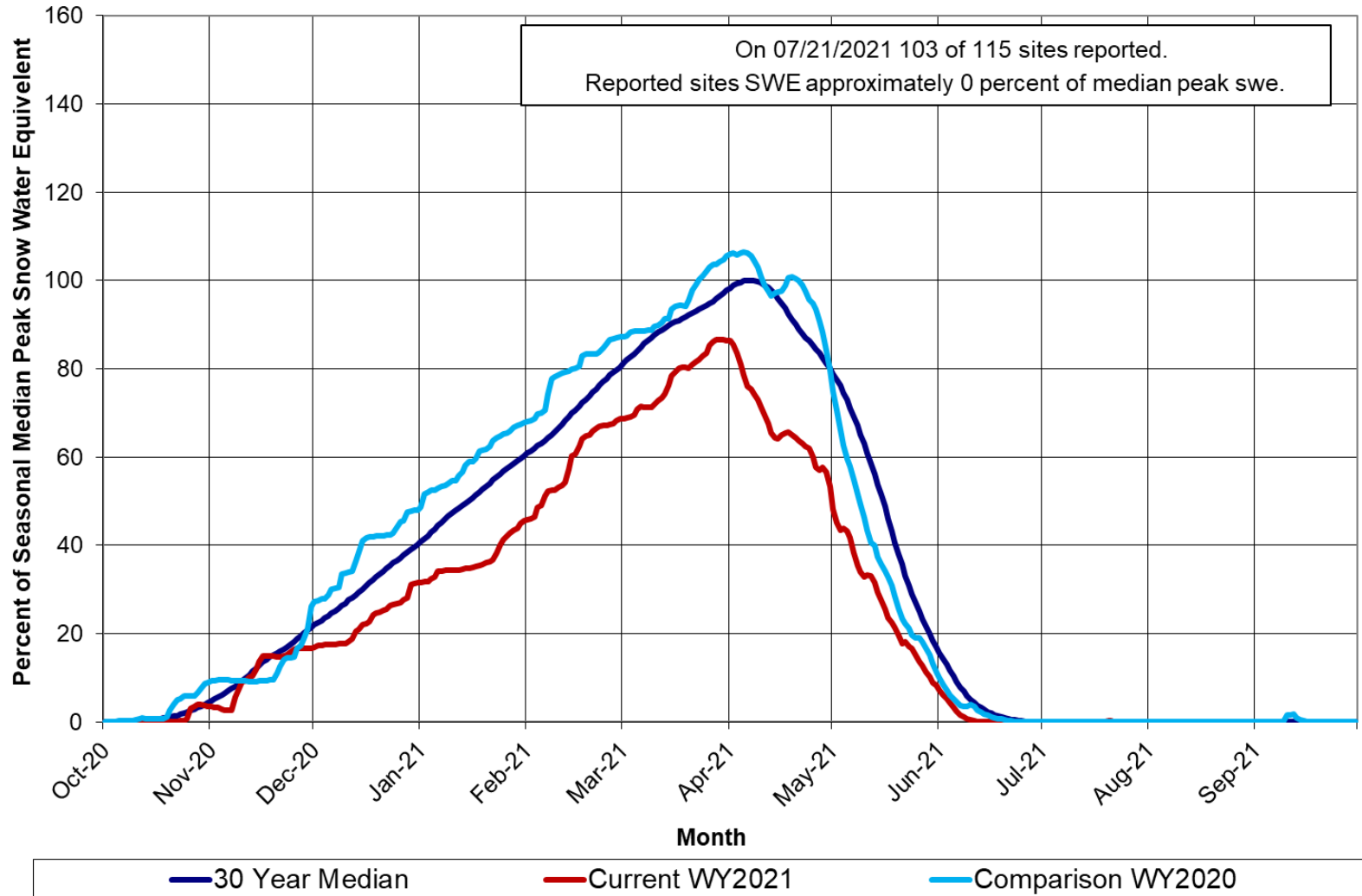
Updated as of July 27, 2021



Snow Water Equivalent

Conditions as of July 21, 2021

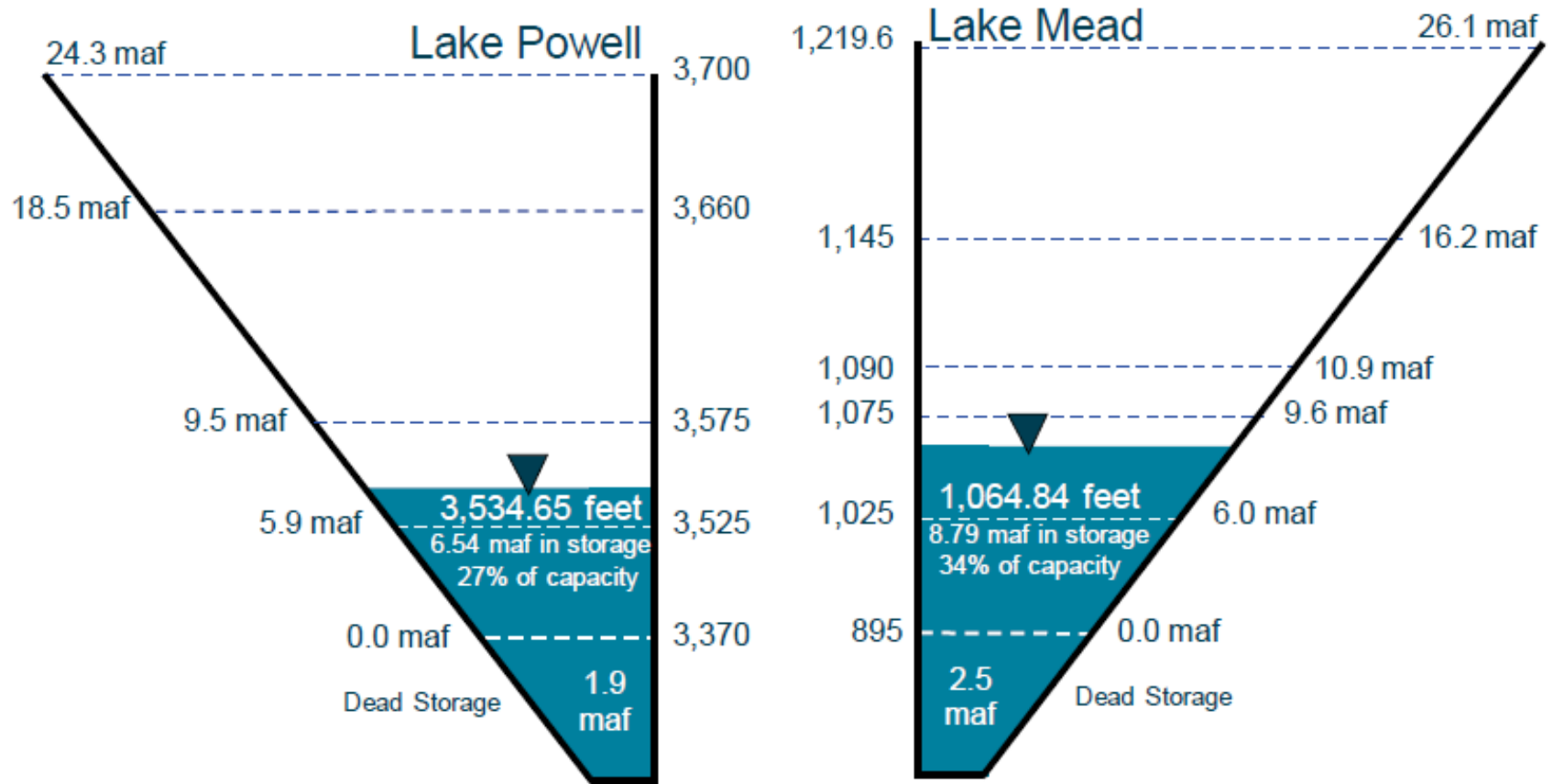
Upper Colorado River above Lake Powell Snotel Tracking Aggregate of 115 Snotel Sites above Lake Powell



End of Calendar Year 2021 Projections

July 2021 24-Month Study Most Probable Inflow Scenario¹

Based on a Lake Powell release of 8.23 maf in WY 2021 and 7.48 maf in WY 2022



Not to Scale

¹ WY 2021 unregulated inflow into Lake Powell is based on the CBRFC forecast dated 7/1/21.



Lake Powell & Lake Mead Operational Table

Projected Tiers for Water/Calendar Year 2022¹ as published in the July 2021 24-Month Study

Lake Powell			Lake Mead		
Elevation (feet)	Operation According to the Interim Guidelines	Live Storage (maf) ¹	Elevation (feet)	Operation According to the Interim Guidelines	Live Storage (maf) ²
3,700	Equalization Tier Equalize, avoid spills or release 8.23 maf	24.3	1,220	Flood Control Surplus or Quantified Surplus Condition Deliver > 7.5 maf	25.9
3,636 - 3,666 (2008-2026)	Upper Elevation Balancing Tier³ Release 8.23 maf; if Lake Mead < 1,075 feet, balance contents with a min/max release of 7.0 and 9.0 maf	15.5 - 19.3 (2008-2026)	1,200 (approx.) ²	Domestic Surplus or ICS Surplus Condition Deliver > 7.5 maf	22.9 (approx.) ²
3,575			1,145		
	Mid-Elevation Release Tier Release 7.48 maf; if Lake Mead < 1,025 feet, release 8.23 maf	9.5	1,105	Normal or ICS Surplus Condition Deliver ≥ 7.5 maf	11.9
3,534.65 ft			1,075		
3,525	<i>Jan 1, 2022 Projection</i>	5.9	1,050	Shortage Condition Deliver 7.167 ⁴ maf	7.5
	Lower Elevation Balancing Tier Balance contents with a min/max release of 7.0 and 9.5 maf		1,025	Shortage Condition Deliver 7.083 ⁵ maf	
3,490			4.0	1,000	Shortage Condition Deliver 7.0 ⁶ maf Further measures may be undertaken ⁷
3,370		0	895		0

1,064.84 ft

Jan 1, 2022 Projection

Diagram not to scale

¹ Acronym for million acre-feet

² This elevation is shown as approximate as it is determined each year by considering several factors including Lake Powell and Lake Mead storage, projected Upper Basin and Lower Basin demands, and an assumed inflow.

³ Subject to April adjustments which may result in a release according to the Equalization Tier

⁴ Of which 2.48 maf is apportioned to Arizona, 4.4 maf to California, and 0.287 maf to Nevada

⁵ Of which 2.40 maf is apportioned to Arizona, 4.4 maf to California, and 0.283 maf to Nevada

⁶ Of which 2.32 maf is apportioned to Arizona, 4.4 maf to California, and 0.280 maf to Nevada

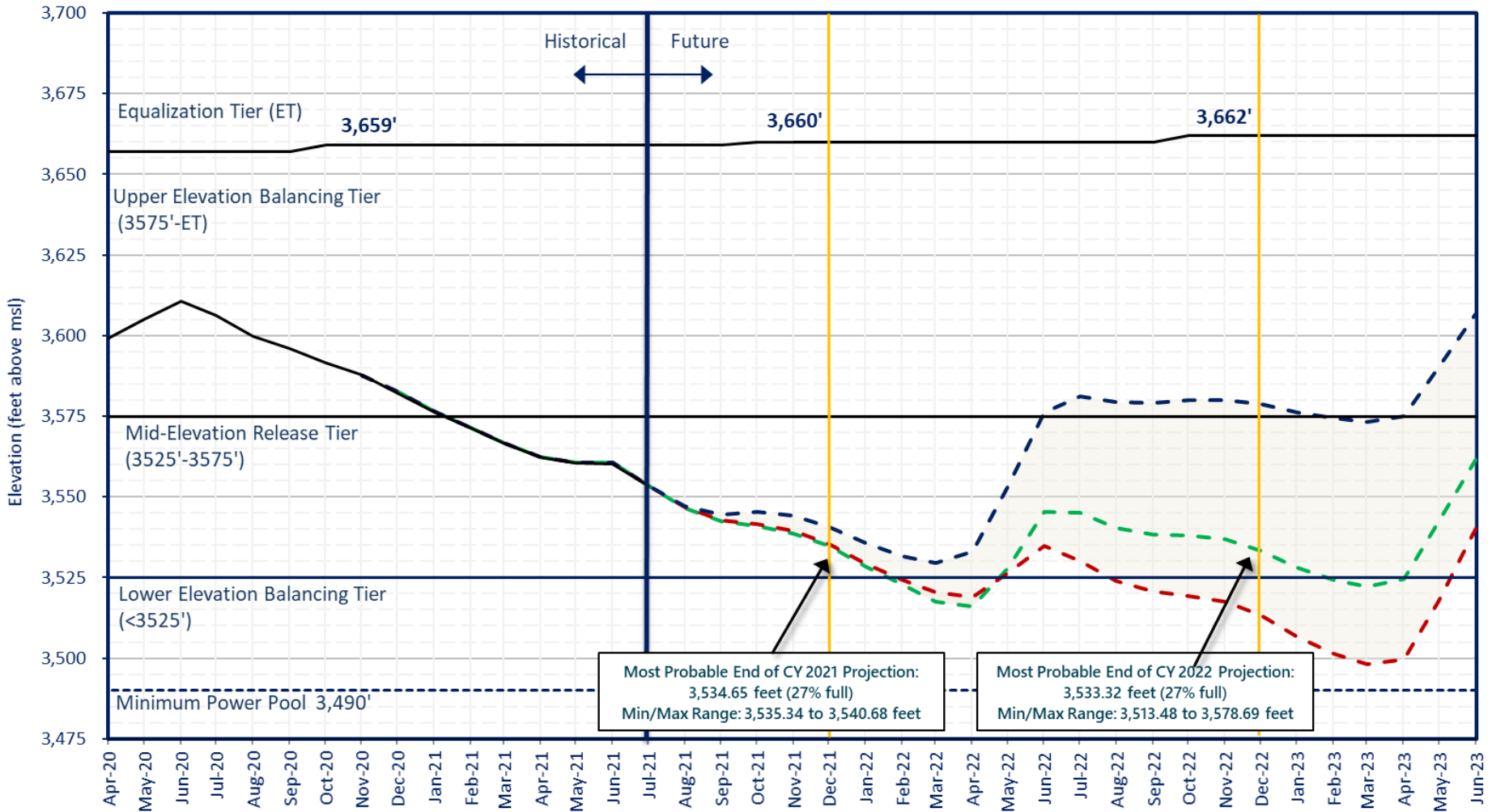
⁷ Whenever Lake Mead is below elevation 1,025 feet, the Secretary shall consider whether hydrologic conditions together with anticipated deliveries to the Lower Division States and Mexico is likely to cause the elevation at Lake Mead to fall below 1,000 feet. Such consideration, in consultation with the Basin States, may result in the undertaking of further measures, consistent with applicable Federal law.

¹ Lake Powell and Lake Mead operational tier determinations will be based on the August 2021 24-Month Study projections and will be documented in the draft 2022 AOP.



Lake Powell End of Month Elevations

Projections from the July 2021 24-Month Study Inflow Scenarios



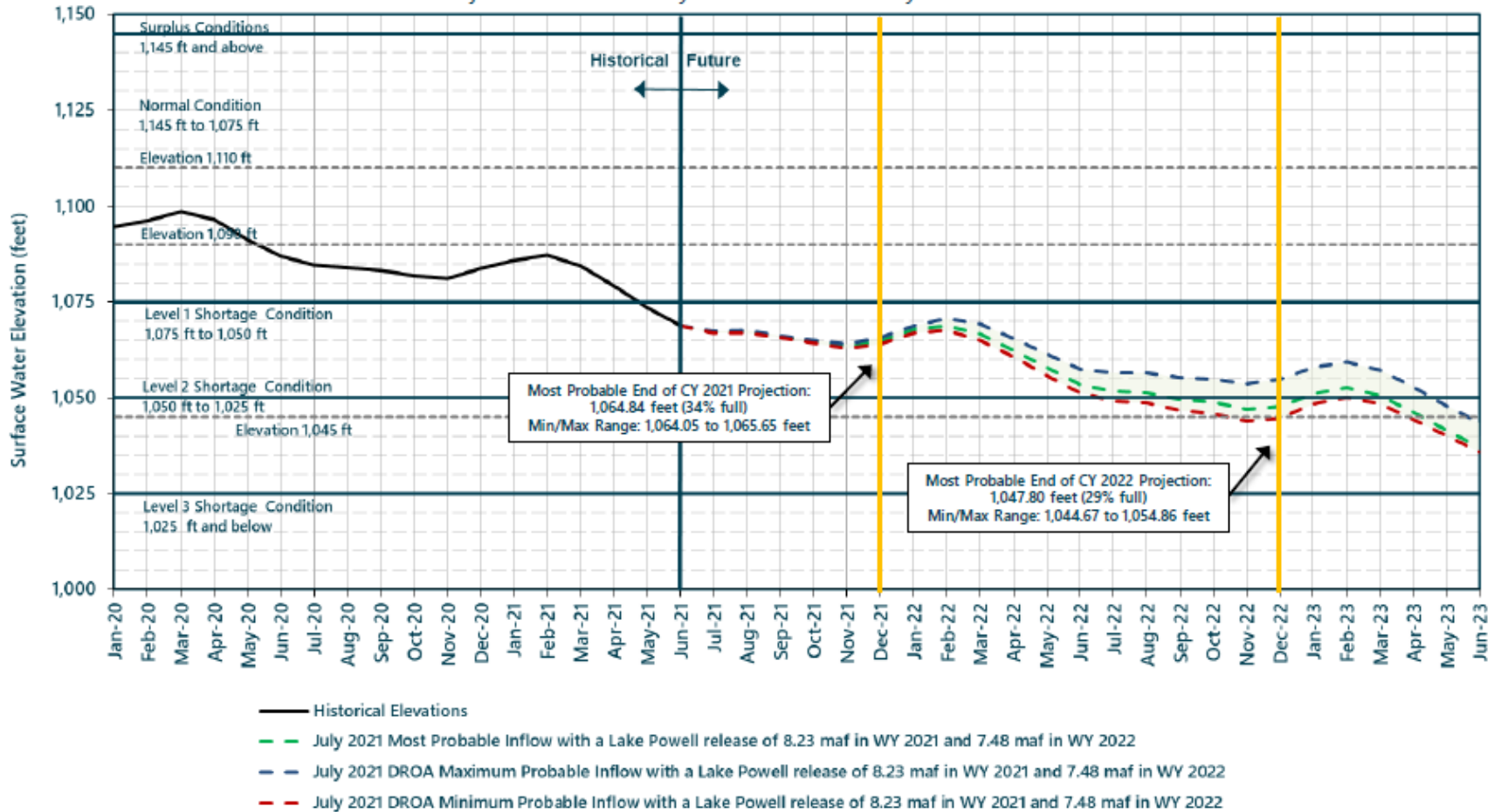
BUREAU OF RECLAMATION

- July 2021 Most Probable - Lake Powell release of 8.23 maf in WY2021 and 7.48 maf in WY2022
- July 2021 DROA* Minimum Probable - Lake Powell release of 8.23 maf in WY2021 and 7.48 maf in WY2022
- July 2021 DROA* Maximum Probable - Lake Powell release of 8.23 maf in WY2021 and 7.48 maf in WY2022
- Historical Elevations

*The Drought Response Operations Agreement (DROA) can be found here: <https://www.usbr.gov/dcp/finaldocs.html>

Lake Mead End of Month Elevations

Projections from the July 2021 24-Month Study Inflow Scenarios



*The Drought Response Operations Agreement (DROA) is available online at: <https://www.usbr.gov/dcp/finaldocs.html>.



Questions?

Rabi Gyawali
rgyawali@AZWater.gov

