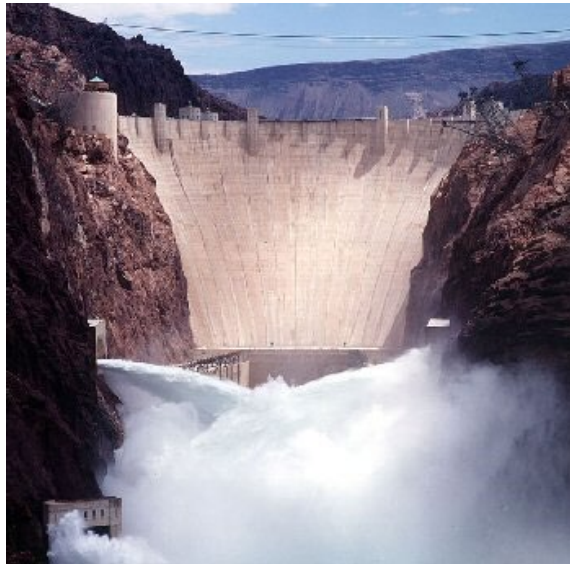


# ***COLORADO RIVER BASIN UPDATE AND STATUS***

Presented to

**Arizona Water Banking Authority  
December 2, 2020**



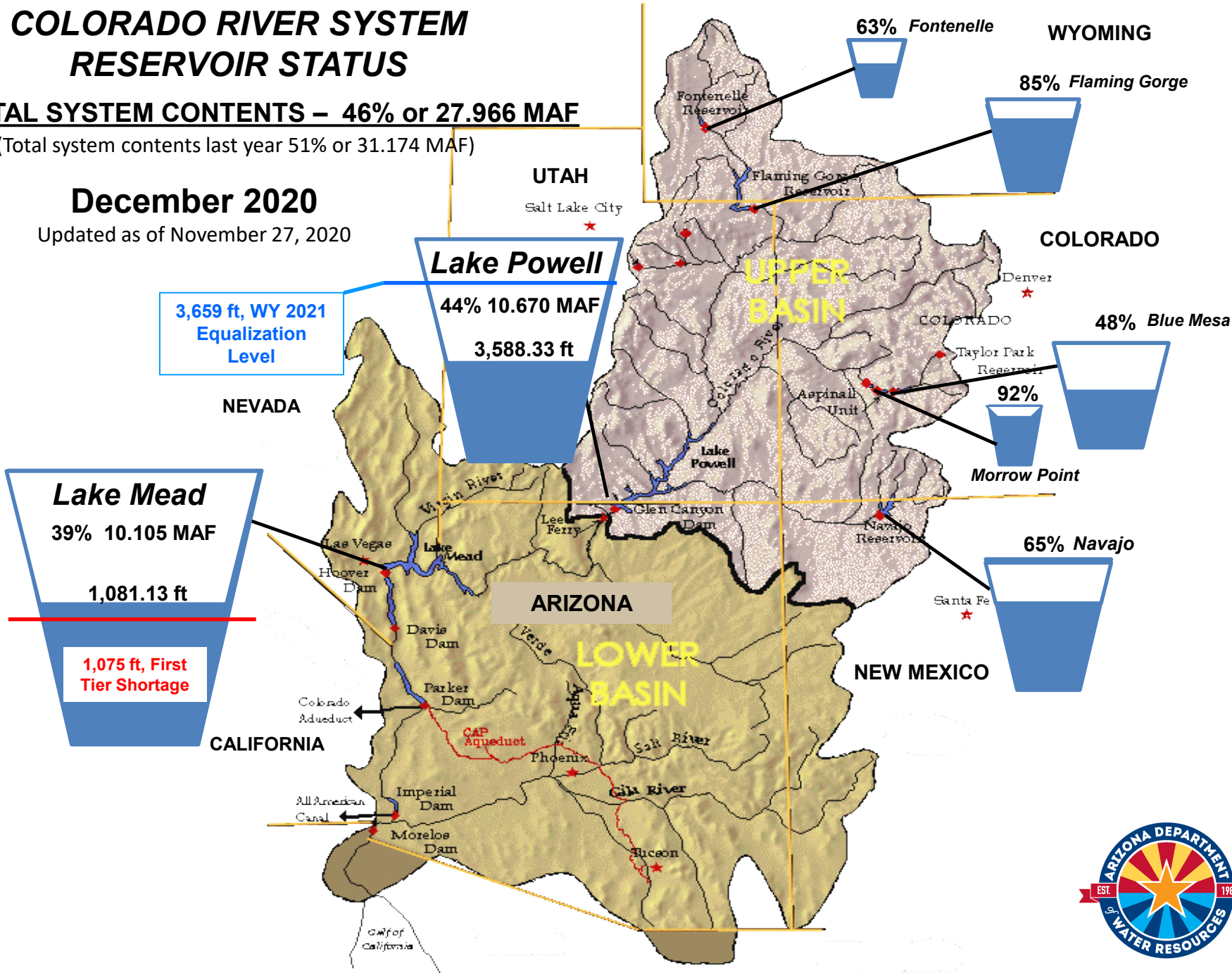
# COLORADO RIVER SYSTEM RESERVOIR STATUS

**TOTAL SYSTEM CONTENTS – 46% or 27.966 MAF**

(Total system contents last year 51% or 31.174 MAF)

**December 2020**

Updated as of November 27, 2020

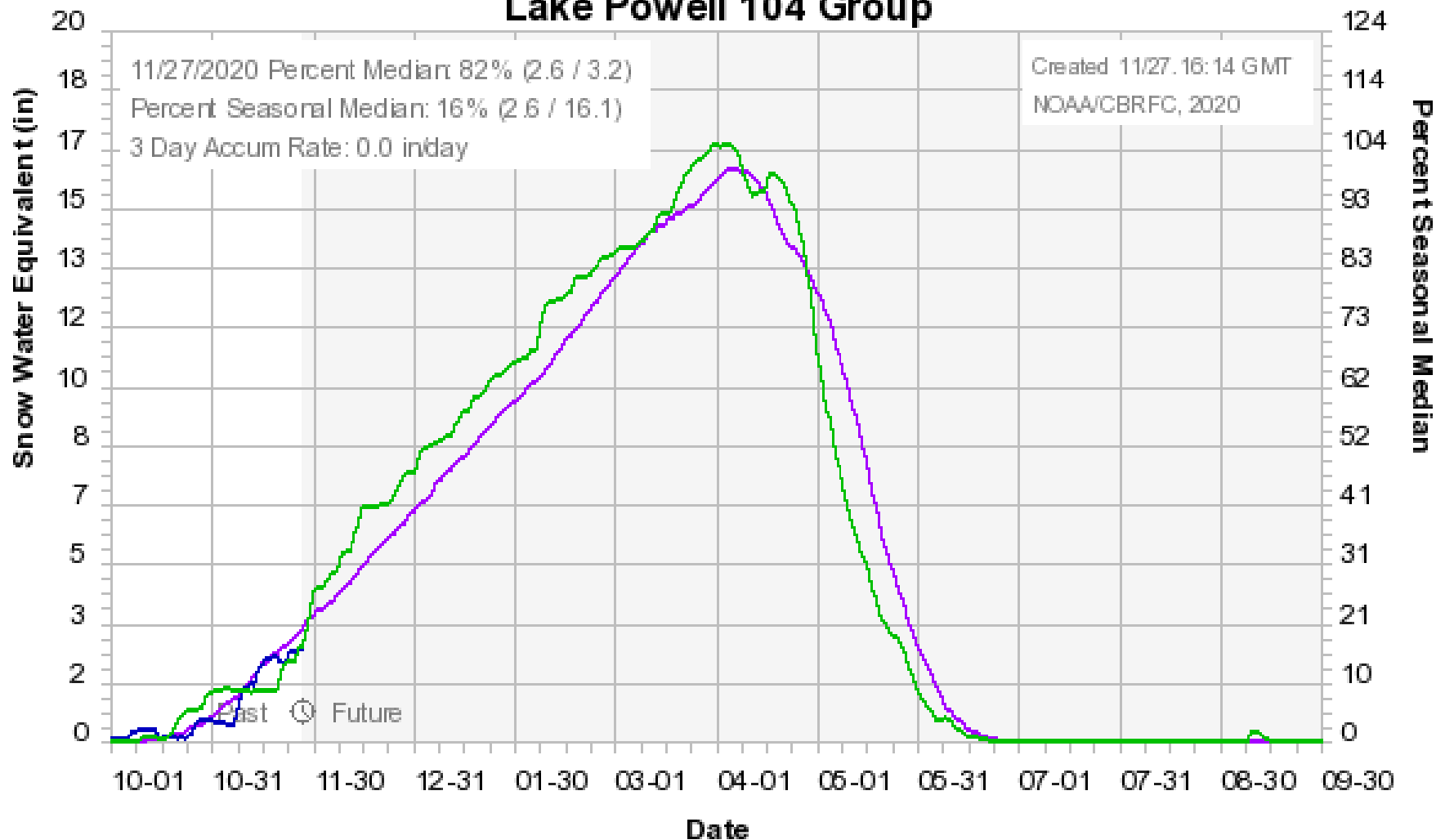


# Water years 2020 & 2021

Snowpack as of November 27, 2020

Colorado Basin River Forecast Center

## Lake Powell 104 Group

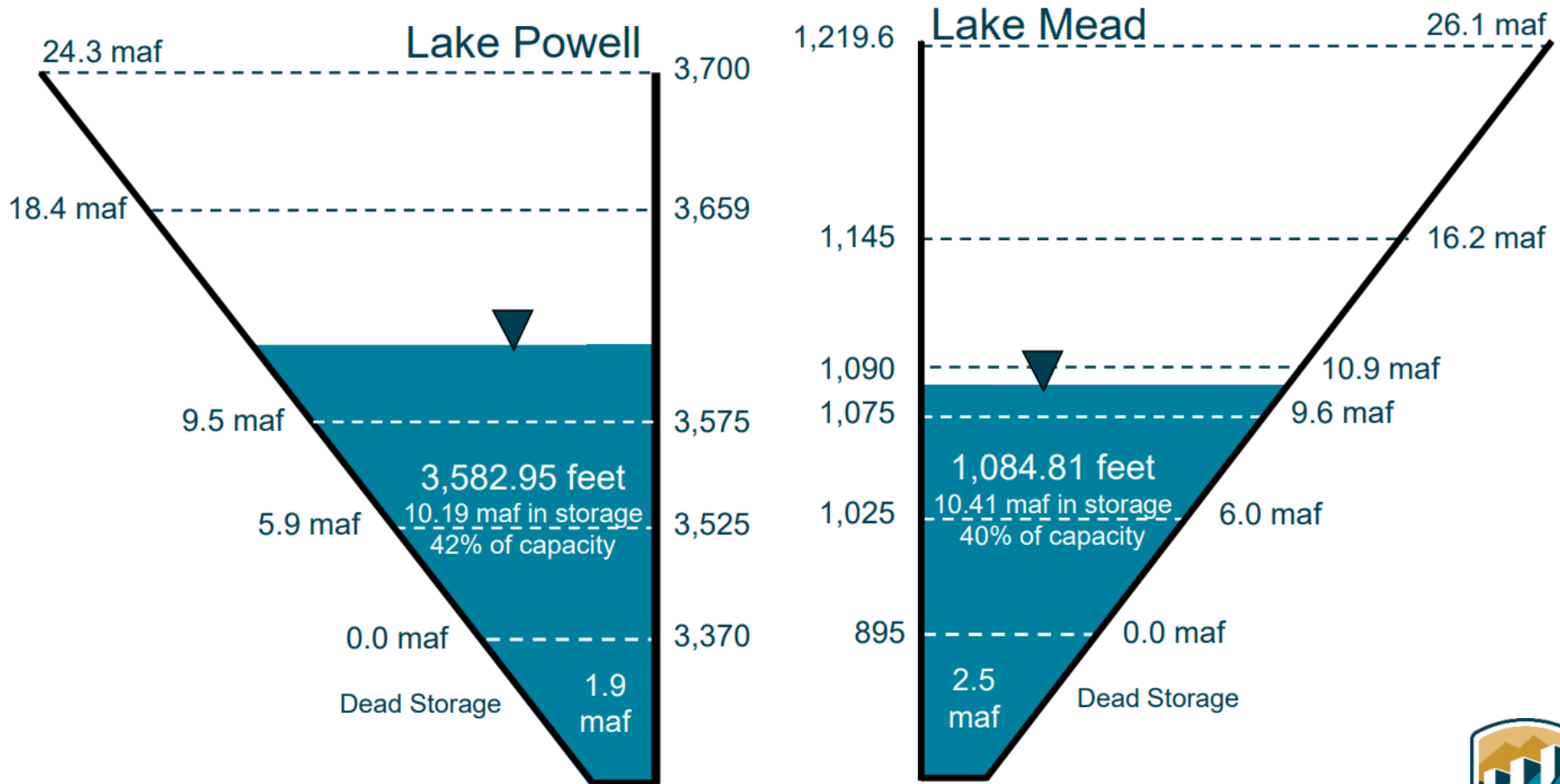


Median 1981-2010 2021 2020

# End of Calendar Year 2020 Projections

November 2020 24-Month Study Most Probable Inflow Scenario<sup>1</sup>

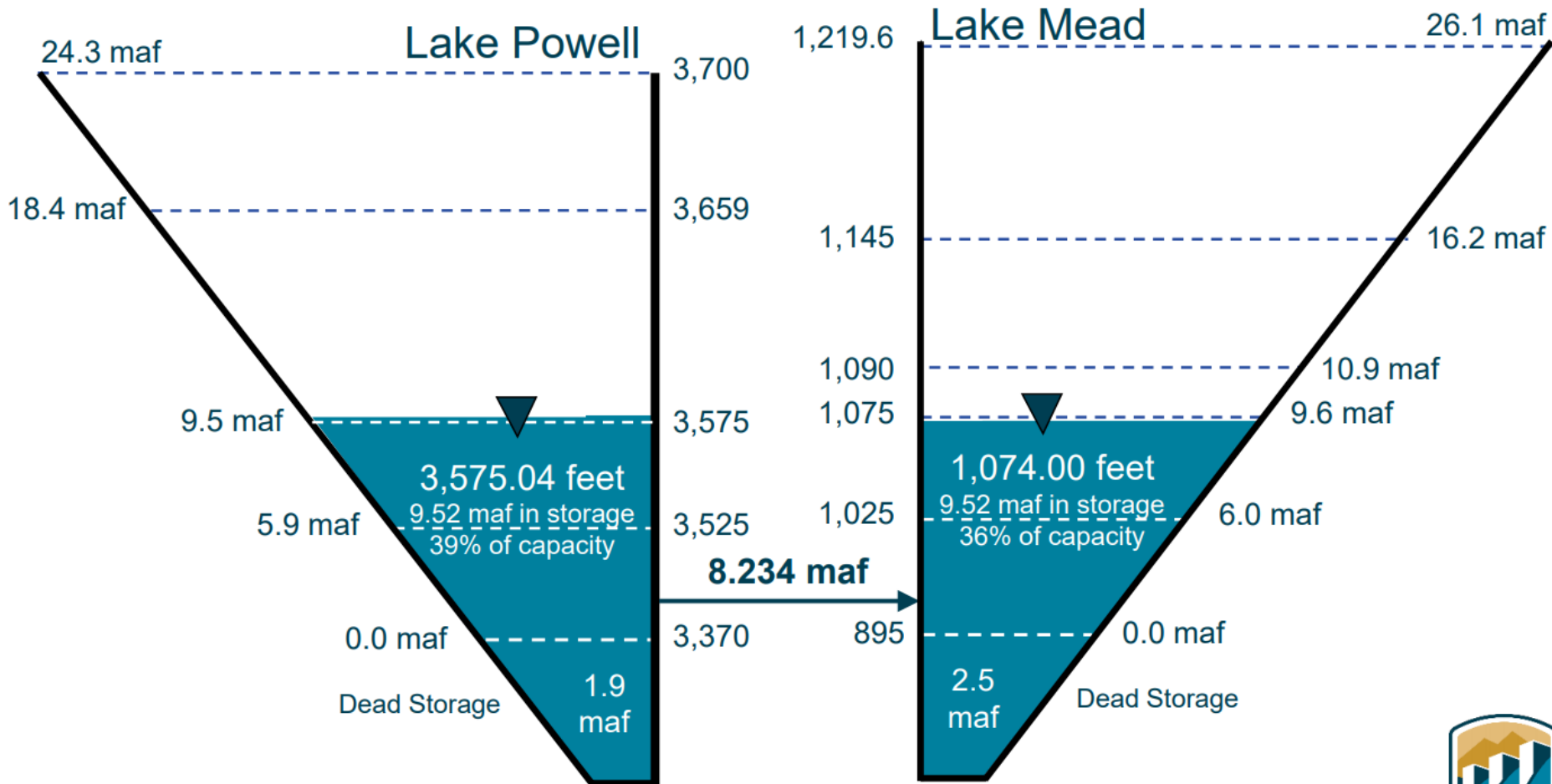
*Based on a Lake Powell release of 8.23 maf in WY 2020 and 8.234 maf in WY 2021*



# End of Water Year 2021 Projections

November 2020 24-Month Study Most Probable Inflow Scenario<sup>1</sup>

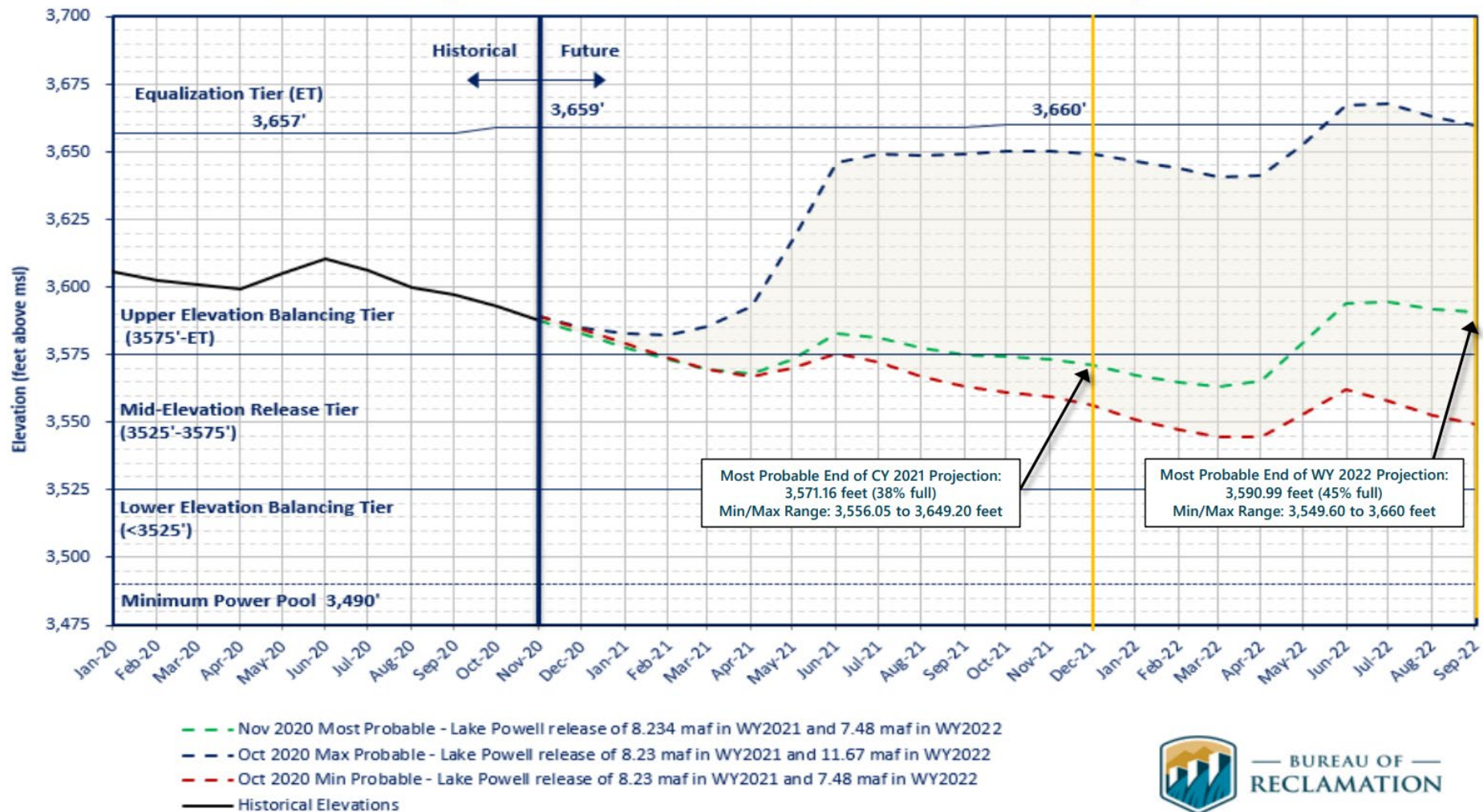
*Based on a Lake Powell Unregulated Inflow Forecast of 6.79 maf (63% of average)*





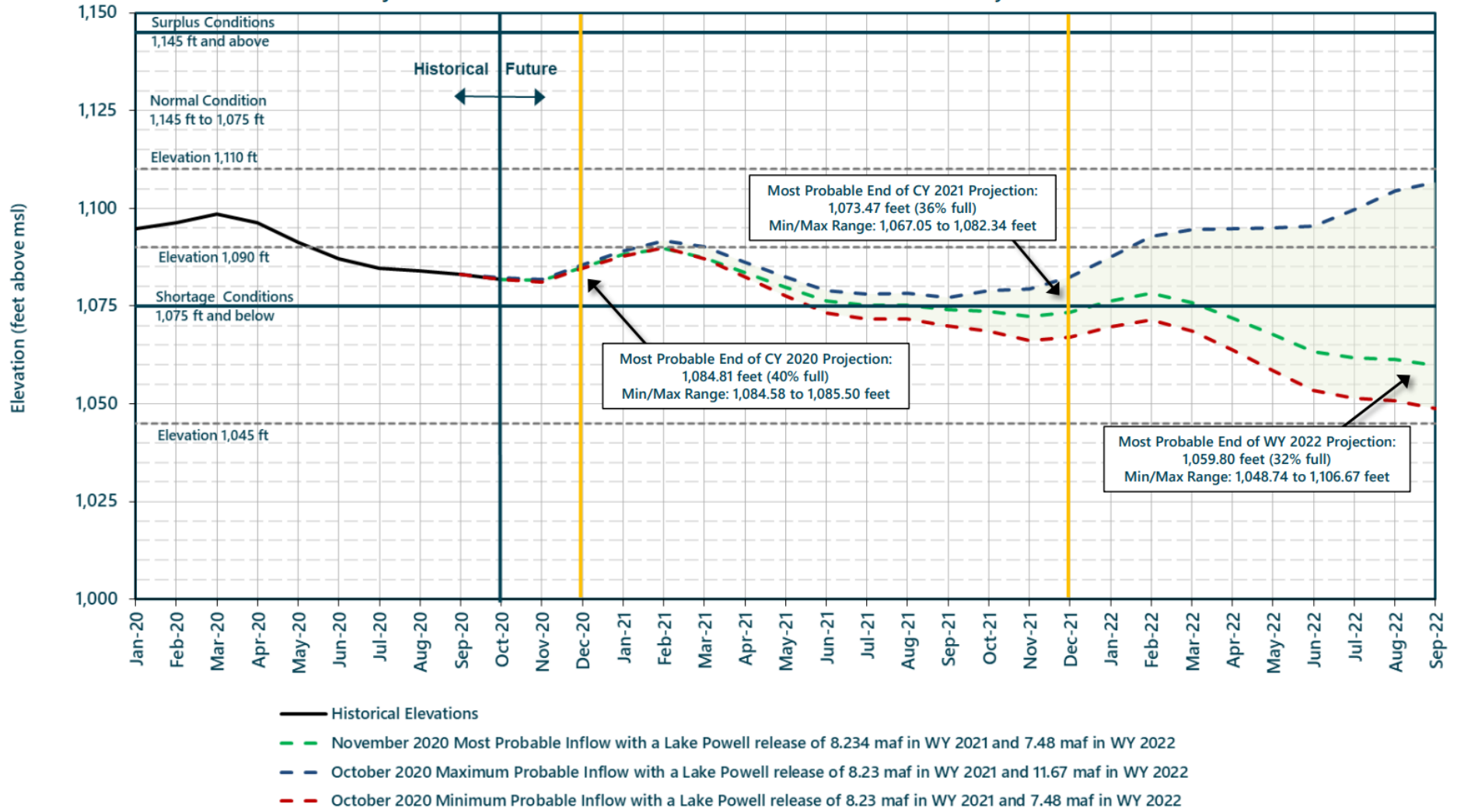
# Lake Powell End of Month Elevations

Historic and Projected based on October and November 2020 24-Month Study Inflow Scenarios



# Lake Mead End of Month Elevations

Projections from the October and November 2020 24-Month Study Inflow Scenarios



# Lake Powell & Lake Mead Operational Table

Operational Tiers for Water/Calendar Year 2021<sup>1</sup>

Lake Powell			Lake Mead		
Elevation (feet)	Operation According to the Interim Guidelines	Live Storage (maf) <sup>2</sup>	Elevation (feet)	Operation According to the Interim Guidelines	Live Storage (maf) <sup>2</sup>
3,700	<b>Equalization Tier</b> Equalize, avoid spills or release 8.23 maf	24.3	1,220	<b>Flood Control Surplus or Quantified Surplus Condition</b> Deliver > 7.5 maf	25.9
3,636 - 3,666 (2008-2026)	<b>Upper Elevation Balancing Tier<sup>4</sup></b> Release 8.23 maf if Lake Mead < 1,075 feet, balance contents with a min/max release of 7.0 and 9.0 maf	15.5 - 19.3 (2008-2026)	1,200 (approx.) <sup>3</sup>	<b>Domestic Surplus or ICS Surplus Condition</b> Deliver > 7.5 maf	22.9 (approx.) <sup>3</sup>
			1,145	<b>Normal or ICS Surplus Condition</b> Deliver ≥ 7.5 maf	15.9
3,575		9.5	1,105		11.9
			1,075	<b>Shortage Condition</b> Deliver 7.167 <sup>5</sup> maf	9.4
	<b>Mid-Elevation Release Tier</b> Release 7.48 maf, if Lake Mead < 1,025 maf, release 8.23 maf		1,050	<b>Shortage Condition</b> Deliver 7.083 <sup>6</sup> maf	7.5
3,525		5.9	1,025	<b>Shortage Condition</b> Deliver 7.0 <sup>7</sup> maf Further measures may be undertaken <sup>8</sup>	5.8
	<b>Lower Elevation Balancing Tier</b> Balance contents with a min/max release of 7.0 and 9.0 maf		1,000		4.3
3,490		4.0	895		0
3,370		0			

3,571.16'

1073.47'

Diagram not to scale

<sup>1</sup> Lake Powell and Lake Mead operational tier determinations were based on November 2020 24-Month Study projections.

<sup>2</sup> Acronym for million acre-feet

<sup>3</sup> This elevation is shown as approximate as it is determined each year by considering several factors including Lake Powell and Lake Mead storage, projected Upper Basin and Lower Basin demands, and an assumed inflow.

<sup>4</sup> Subject to April adjustments which may result in a release according to the Equalization Tier

<sup>5</sup> of which 2.48 maf is appropriated to Arizona, 4.4 maf to California, and 0.287 maf to Nevada

<sup>6</sup> of which 2.40 maf is appropriated to Arizona, 4.4 maf to California, and 0.283 maf to Nevada

<sup>7</sup> of which 2.32 maf is appropriated to Arizona, 4.4 maf to California, and 0.280 maf to Nevada

<sup>8</sup> Whenever Lake Mead is below elevation 1,025 feet, the Secretary shall consider whether hydrologic conditions together with anticipated deliveries to the Lower Division States and Mexico is likely to cause the elevation at Lake Mead to fall below 1,000 feet. Such consideration, in consultation with the Basin States, may result in the undertaking of further measures, consistent with applicable Federal law.



# Questions?

Bret Esslin  
BCEsslin@AZWater.gov

