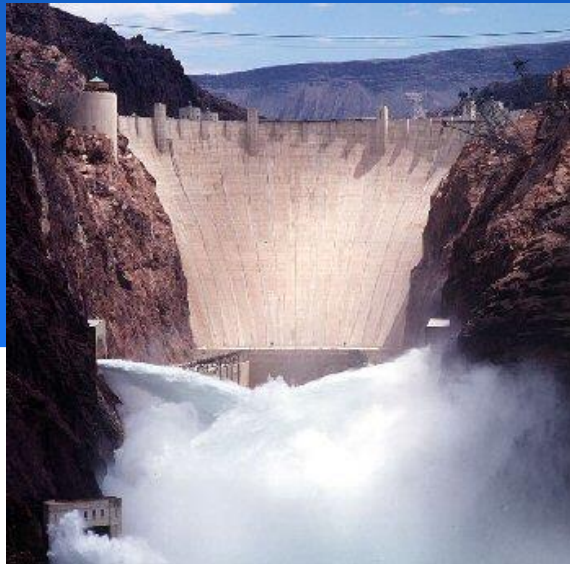


COLORADO RIVER BASIN UPDATE AND STATUS

Presented to

**Arizona Water Banking Authority
September 25, 2019**

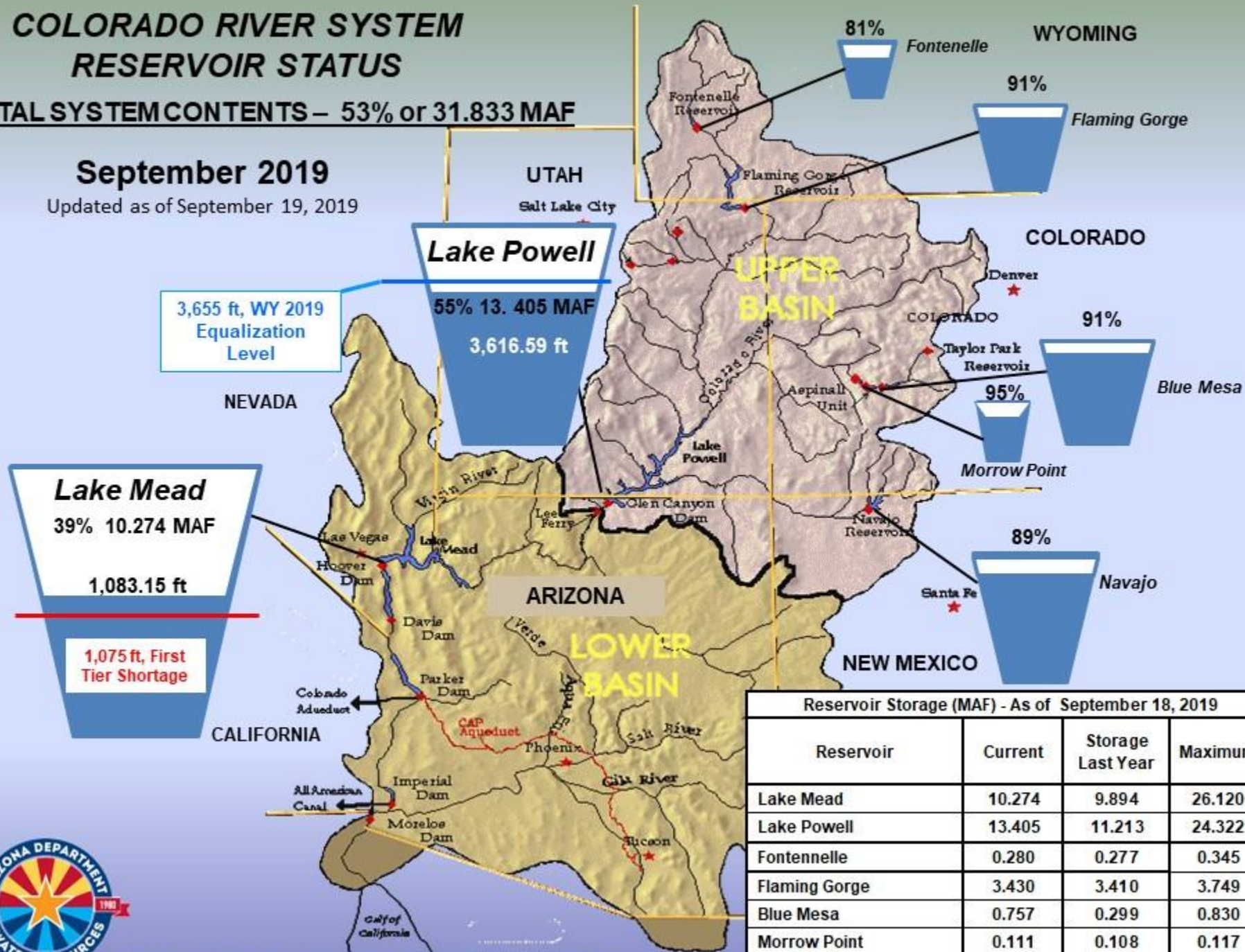


COLORADO RIVER SYSTEM RESERVOIR STATUS

TOTAL SYSTEM CONTENTS – 53% or 31.833 MAF

September 2019

Updated as of September 19, 2019



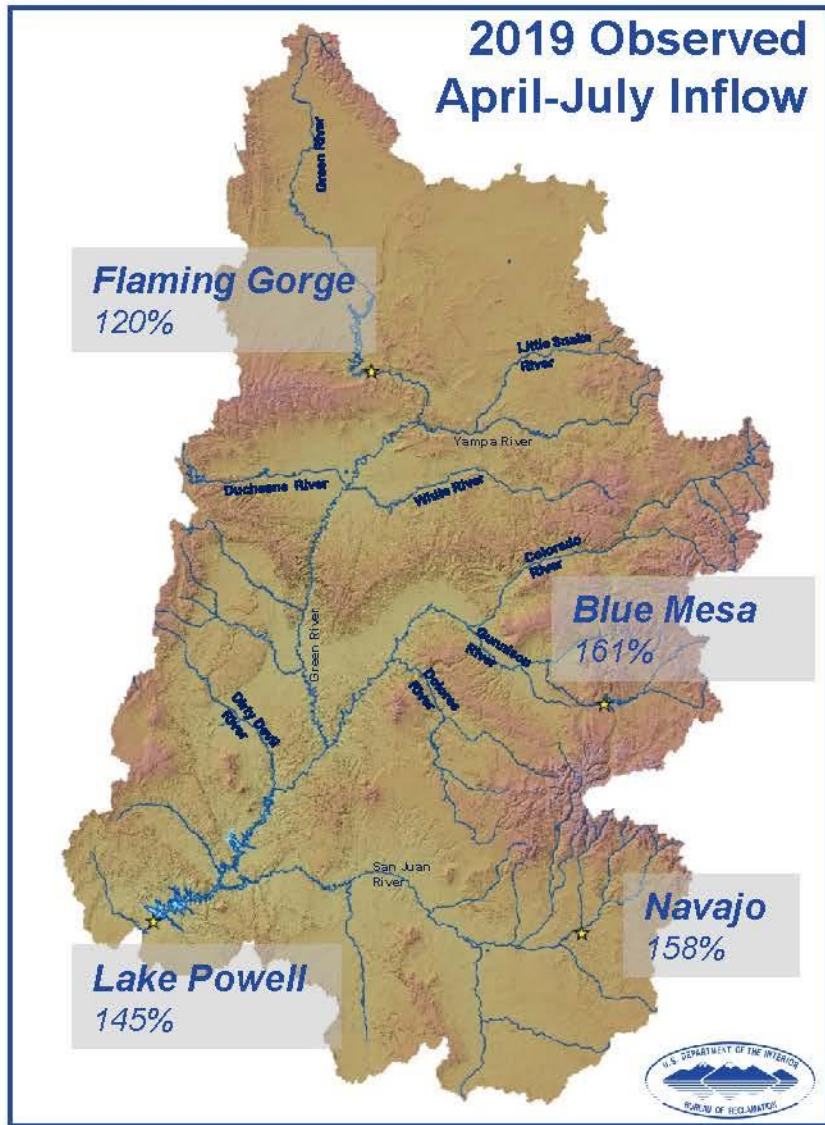
Reservoir Storage (MAF) - As of September 18, 2019			
Reservoir	Current	Storage Last Year	Maximum
Lake Mead	10.274	9.894	26.120
Lake Powell	13.405	11.213	24.322
Fontenelle	0.280	0.277	0.345
Flaming Gorge	3.430	3.410	3.749
Blue Mesa	0.757	0.299	0.830
Morrow Point	0.111	0.108	0.117
Navajo	1.510	0.950	1.696

Data Source: United States Bureau of Reclamation



CBRFC Unregulated Inflow Forecast

Dated September 16, 2019

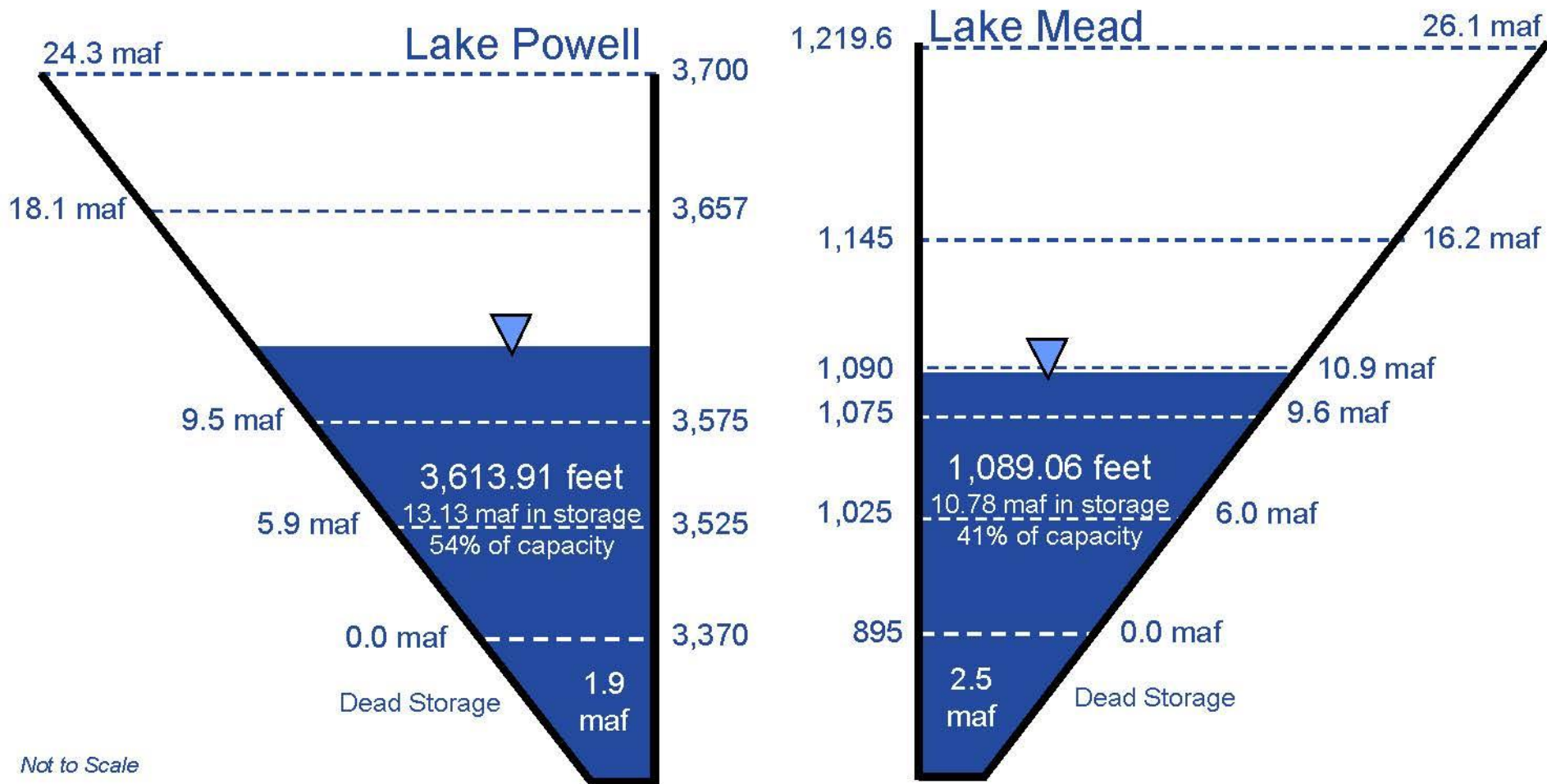


Powell Unregulated Inflow Forecast		
Month/Period	Inflow (kaf)	Percent of Average
Aug 2019 <i>(Observed)</i>	472	94
Sep 2019	300	74
Oct 2019	550	107
Nov 2019	520	110
2019 Apr-Jul <i>(Observed)</i>	10,410	145
WY 2019	13,107	121

End of Calendar Year 2019 Projections

September 2019 24-Month Study Most Probable Inflow Scenario¹

Based on a Lake Powell release of 9.00 maf in WY 2019 & 8.23 maf in WY 2020



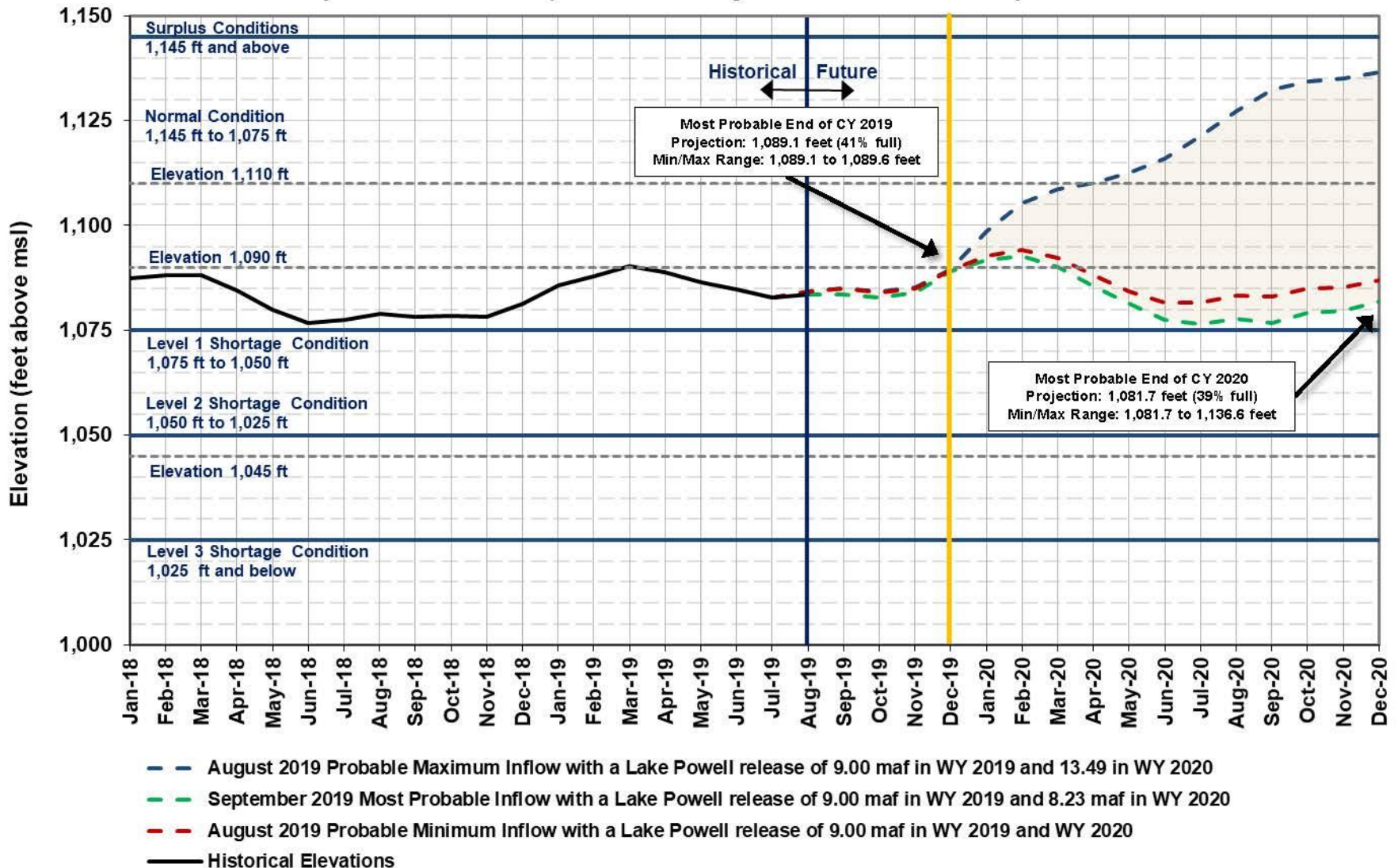
Not to Scale

¹ WY 2019 unregulated inflow into Lake Powell is based on the

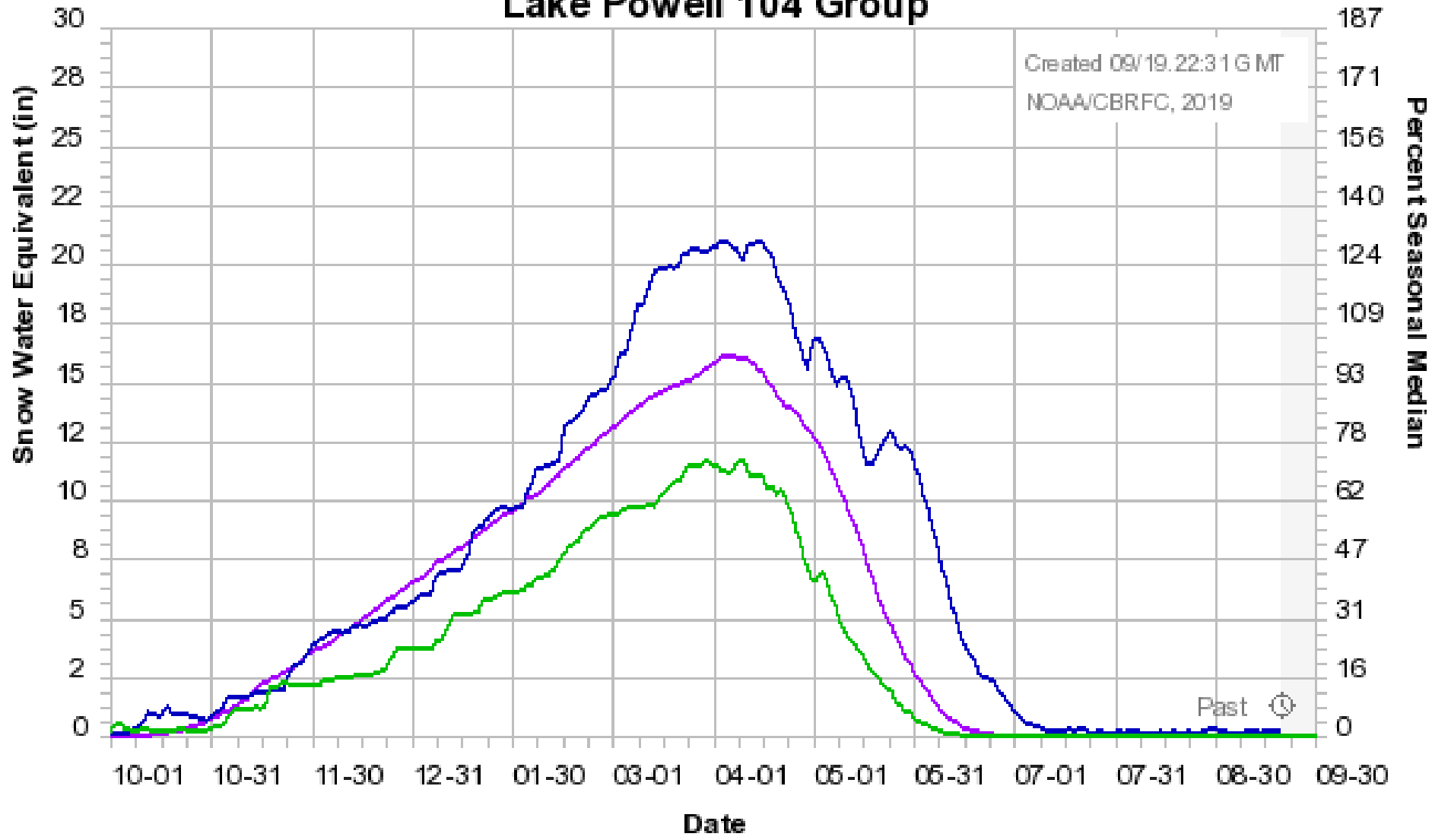
7 CBRFC forecast dated 9/3/19.

Lake Mead End of Month Elevations

Projections from the September and August 2019 24-Month Study Inflow Scenarios



Colorado Basin River Forecast Center Lake Powell 104 Group



Median 1981-2010 2019 2018

Questions?

Craig McGinnis
602.771.0201
cmcginnis@azwater.gov



PROTECTING
ARIZONA'S WATER SUPPLIES
for **CURRENT & FUTURE GENERATIONS**

